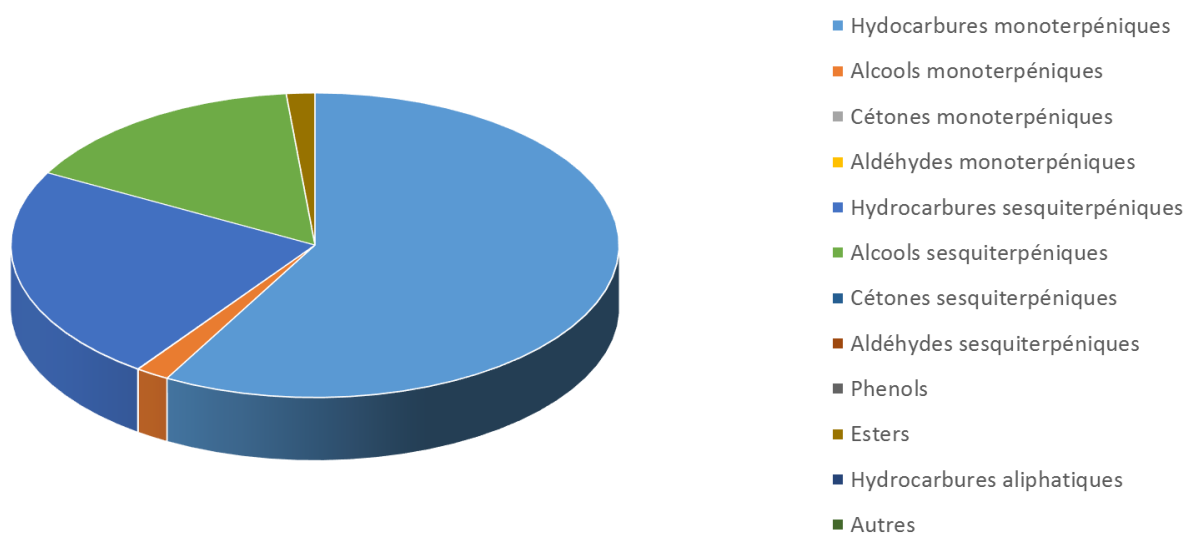

 <b>FLORIHANA</b>	<b>ENREGISTREMENT DES BULLETINS ANALYTIQUES : CHROMATOGRAPHIE ESSENTIAL OIL CHROMATOGRAPHY SHEET RECORDS</b>	<b>FORM-LAB005-B</b>	<b>Page 1 sur 4</b>
<b>JE INTERNATIONAL</b>		<b>Date d'entrée en vigueur / taking effect : 10/06/2011</b>	

Date : 22/10/2020  
 Référence produit / Product reference : FLJ002  
 Huile essentielle de / Essential oil of : Hinoki  
 Numéro de lot / Lot Number : R221020JP  
 Densité à 20°C (g/cm<sup>3</sup>) / Density to 20°C (g/cm<sup>3</sup>) : 0.893  
 Indice de réfraction / Refractive index : 1.481  
 Pouvoir rotatoire à 20°C / Optical rotation to 20°C : +30.10°  
 Mode de culture / Culture mode : Sauvage / Wild  
 Pays / Country : Japon / Japan  
 Date de production / Production date : 01/2020  
 D.L.U. / Shelf life : 02/2025  
 Mode d'extraction / Extraction mode : Distillation à la vapeur / Steam distillation  
 % Bio / % Organic : 0%  
 Nom Latin / Latin Name : Chamaecyparis obtusa  
 Parties utilisées / Used Parts : Bois / Wood



 <b>FLORIHANA</b>	<b>ENREGISTREMENT DES BULLETINS ANALYTIQUES : CHROMATOGRAPHIE ESSENTIAL OIL CHROMATOGRAPHY SHEET RECORDS</b>	<b>FORM-LAB005-B</b>	<b>Page 2 sur 4</b>
<b>JE INTERNATIONAL</b>		<b>Date d'entrée en vigueur / taking effect : 10/06/2011</b>	


<b>Molécule</b>	<b>%</b>
ACETONE	0.01
TRICYCLEN	0.18
ALPHA-PINENE	53.81
ALPHA-THUJENE	0.2
ALPHA-FENCHENE	0.12
CAMPHENE	0.24
BETA-PINENE	0.57
SABINENE	0.08
PINADIENE	0.02
BETA-MYRCENE	0.93
ALPHA-PHELLANDRENE	0.04
ALPHA-TERPINENE	0.06
GAMMA-TERPINENE	0.1
<b>LIMONENE *</b>	1.13
BETA-PHELLANDRENE	0.04
PARA-CYMENE	0.11
TERPINOLENE	0.5
TERPINENE-4-OL	0.45
ALPHA-PARA-DIMETHYLSTYRENE	0.05
ALPHA-CUBEBENE	0.04
ALPHA-COPAENE	0.27
CAMPHRE	0.03
BETA-1-CUBEBENE	0.03
ACETATE DE BORNYLE	0.37
FENCHOL	0.02
BETA-ELEMENE	1.49
BETA-CARYOPHYLLENE	0.18
AROMADENDRENE	0.03
CADINA-3,5-DIENE	0.1
GERMACRENE A	0.12
ZONARENE	0.32
ACETATE DE CITRONELLYLE	0.04
TRANS-PINOCARVEOL	0.02
ALPHA-HUMULENE	0.25
CIS-4,5-MUUROLADIENE	0.24
GAMMA-MUUROLENE	1.7
ALPHA-MUUROLENE	2.45
GAMMA-SELINENE	0.14
ALPHA-SELINENE	0.33

 <b>FLORIHANA</b>	<b>ENREGISTREMENT DES BULLETINS ANALYTIQUES : CHROMATOGRAPHIE ESSENTIAL OIL CHROMATOGRAPHY SHEET RECORDS</b>	<b>FORM-LAB005-B</b>	<b>Page 3 sur 4</b>
<b>JE INTERNATIONAL</b>		<b>Date d'entrée en vigueur / taking effect : 10/06/2011</b>	

ACETATE DE TERPENYLE	1.07
ALPHA-TERPINEOL	0.41
BORNEOL	0.23
VERBENONE	0.03
GERMACRENE D	0.54
BICYCLOGERMACRENE	0.12
EREMOPHILENE	0.27
DELTA-CADINENE	12.36
GAMMA-CADINENE	0.23
CADINA-1,4-DIENE	0.07
<b>CITRONELLOL *</b>	0.14
MYRTENOL	0.02
ALPHA-AMORPHENE	0.56
SESQUITERPENE	0.36
SESQUITERPENOL	0.1
CIS-CALAMENENE	0.07
TRANS-CALAMENENE	0.15
ALPHA-CALACORENE	0.11
BETA-CALACORENE	0.030
PARA-CYMENE-8-OL	0.06
EPI-CUBEBOL	0.21
CUBEBOL	0.18
EPI-CUBENOL	0.58
CUBENOL	0.51
NEROLIDOL	0.37
GERMACRA-1,5-DIEN-4-OL	0.1
GAMMA-EUDESOL	0.02
EUDESMA-7-EN-4-OL	0.23
T-CADINOL	2.78
DELTA-CADINOL	1.17
ALPHA-MUUROLOL	3.43
CADALENE	0.02
ALPHA-CADINOL	5.52
ACIDE CITRONELLIQUE	0.05
ACIDE GERANIQUE	0.03
EPOXYDE SESQUITERPENIQUE	0.16
<b>Total</b>	<b>99.1</b>

\* = Substance(s) allergène(s) / allergen(s)

\*\* = Substance(s) classée(s) CMR / Substance(s) classified as CMR

 <b>FLORIHANA</b>	<b>ENREGISTREMENT DES BULLETINS ANALYTIQUES : CHROMATOGRAPHIE ESSENTIAL OIL CHROMATOGRAPHY SHEET RECORDS</b>	<b>FORM-LAB005-B</b>	<b>Page 4 sur 4</b>
<b>JE INTERNATIONAL</b>		<b>Date d'entrée en vigueur / taking effect : 10/06/2011</b>	

FLORIHANA