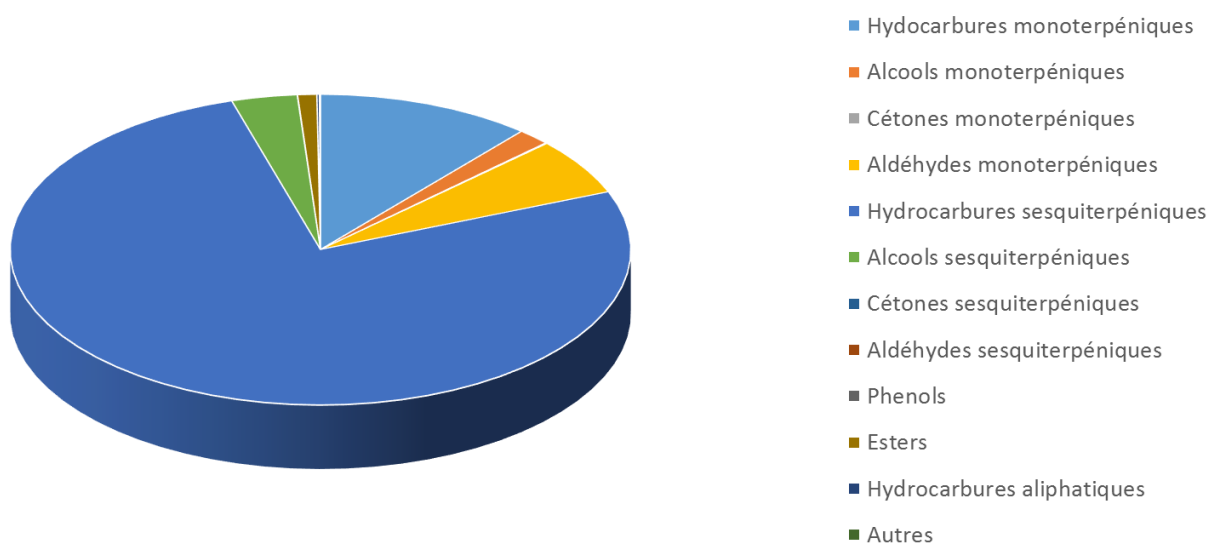
 <b>FLORIHANA</b>	<b>ENREGISTREMENT DES BULLETINS ANALYTIQUES : CHROMATOGRAPHIE ESSENTIAL OIL CHROMATOGRAPHY SHEET RECORDS</b>	<b>FORM-LAB005-B</b>	<b>Page 1 sur 4</b>
<b>JE INTERNATIONAL</b>		<b>Date d'entrée en vigueur / taking effect : 10/06/2011</b>	

Date : 19/03/2020  
 Référence produit / Product reference : FLE115  
 Huile essentielle de / Essential oil of : Gingembre / Ginger  
 Numéro de lot / Lot Number : G180320CI  
 Densité à 20°C (g/cm<sup>3</sup>) / Density to 20°C (g/cm<sup>3</sup>) : 0.8836  
 Indice de réfraction / Refractive index : 1.4929  
 Pouvoir rotatoire à 20°C / Optical rotation to 20°C : -38.99°  
 Mode de culture / Culture mode : Cultivé / Cultivated  
 Pays / Country : Côte d'Ivoire / Ivory Coast  
 Date de production / Production date : 10/2019  
 D.L.U. / Shelf life : 11/2024  
 Mode d'extraction / Extraction mode : Distillation à la vapeur / Steam distillation  
 % Bio / % Organic : 100%  
 Nom Latin / Latin Name : Zingiber Officinale  
 Parties utilisées / Used Parts : Rhizome



Molécule	%
TRICYCLEN	0.068
ALPHA-PINENE	1.097
CAMPHE	3.938
BETA-PINENE	0.142
6-METHYL-5-HEPTENE-2-ONE	0.05
BETA-MYRCENE	0.616
DEHYDRO-1,8-CINEOLE	0.043
ALPHA-PHELLANDRENE	0.213
DELTA-3-CARENE	0.015
ALPHA-TERPINENE	0.047
PARA-CYMENE	0.046
<b>LIMONENE *</b>	0.777
BETA-PHELLANDRENE	1.251
1,8-CINEOLE (EUCALYPTOL)	1.563
GAMMA-TERPINENE	0.038
TERPINOLENE	0.213
<b>LINALOL *</b>	0.39
4,8-DIMETHYL-1,3,7-NONATRIENE	0.069
CAMPHE	0.047
MENTHON	0.065
ISO-BORNEOL	0.026
BORNEOL	0.519
(E)-ISO-CITRAL	0.088
ISO-MENTHOL	0.012
ALPHA-TERPINEOL	0.314
MYRTENAL	0.09
<b>CITRONELLOL *</b>	0.137
<b>NERAL *</b>	1.441
<b>GERANIOL *</b>	0.159
<b>GERANIAL *</b>	3.673
ACETATE DE BORNYLE	0.168
2-UNDECANONE	0.049
DELTA-ELEMENE	0.079
BETA-ELEMENE	0.02
GAMMA-ELEMENE	0.231
ACETATE DE CITRONELLYLE	0.097


 <b>FLORIHANA</b>	<b>ENREGISTREMENT DES BULLETINS ANALYTIQUES : CHROMATOGRAPHIE ESSENTIAL OIL CHROMATOGRAPHY SHEET RECORDS</b>	<b>FORM-LAB005-B</b>	<b>Page 3 sur 4</b>
<b>JE INTERNATIONAL</b>		<b>Date d'entrée en vigueur / taking effect : 10/06/2011</b>	

ALPHA-YLANGENE	0.166
ACETATE DE GERANYLE	0.627
ALPHA-COPAENE	0.323
7-EPI-SESQUITHUJENE	0.022
SESQUITHUJENE	0.183
BETA-CUBEBENE	0.396
ALPHA-CEDRENE	0.179
BETA-CARYOPHYLLENE	0.078
ALPHA-TRANS-BERGAMOTENE	0.145
(E)-BETA-FARNESENE	0.503
SESQUISABINENE	0.248
ALLO-AROMADENDRENE	0.355
GAMMA-CURCUMENE	0.772
Ar-CURCUMENE	3
GERMACRENE D	1.187
ALPHA-ZINGIBERENE	31.464
(E,E)-ALPHA-FARNESENE	9.113
BETA-BISABOLENE	6.142
(E)-GAMMA-BISABOLENE	0.32
GAMMA-CADINENE	0.402
DELTA-CADINENE	0.639
BETA-SESQUIPHELLANDRENE	12.180
ELEMOL	0.182
(E)-NEROLIDOL	0.879
GERMACRENE B	0.249
GAMMA-EUDESOL	0.626
ALPHA-EUDESOL	0.783
ALPHA-MUUROLOL	<b>0.189</b>
EPI-ALPHA-MUUROLOL	0.406
<b>FARNESOL*</b>	0.142
FARNESAL	0.241
<b>Total</b>	<b>89.932</b>

\* = Substance(s) allergène(s) / allergen(s)

\*\* = Substance(s) classée(s) CMR / Substance(s) classified as CMR



 <b>FLORIHANA</b>	<b>ENREGISTREMENT DES BULLETINS ANALYTIQUES : CHROMATOGRAPHIE ESSENTIAL OIL CHROMATOGRAPHY SHEET RECORDS</b>	<b>FORM-LAB005-B</b>	<b>Page 4 sur 4</b>
<b>JE INTERNATIONAL</b>		<b>Date d'entrée en vigueur / taking effect : 10/06/2011</b>	

FLORIHANA

