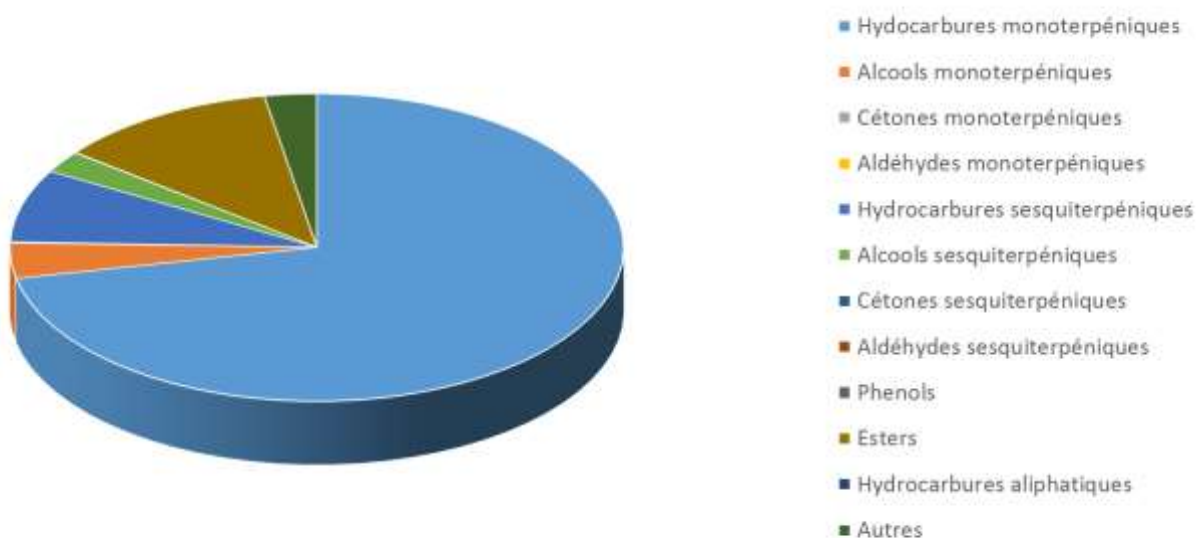


 FLORIHANA JE INTERNATIONAL	ENREGISTREMENT DES BULLETINS ANALYTIQUES : CHROMATOGRAPHIE ESSENTIAL OIL CHROMATOGRAPHY SHEET RECORDS	7-2-ENR-005 v3	Page 1 sur 5
		Date d'application : 01/01/2013	
		Date de révision : 15/04/2022	

Date : 30/11/2023
 Référence produit / Product reference : FLE111
 Huile essentielle de / Essential oil of : Genévrier nain / Juniper Montana
 Numéro de lot / Lot Number : F221123F
 Densité à 20°C (g/cm³) / Density to 20°C (g/cm³) : 0.870
 Indice de réfraction / Refractive index : 1.4767
 Pouvoir rotatoire à 20°C / Optical rotation to 20°C : +16.60°
 Mode de culture / Culture mode : Sauvage / Wild
 Pays / Country : France
 Date de production / Production date : 11/2023
 D.L.U. / Shelf life : 12/2028
 Mode d'extraction / Extraction mode : Distillation à la vapeur / steam distillation
 % Bio / % Organic : 100%
 Nom Latin / Latin Name : Juniperus communis
 Parties utilisées / Used Parts : Branches / Branch



Molécule	%
TRICYCLEN	0.050
ALPHA-PINENE	11.270
BETA-PINENE	0.930
ALPHA-THUJENE	0.300
ALPHA-FENCHENE	0.030
CAMPHE	0.100
CAMPHE	0.010
SABINENE	2.380
DELTA-2-CARENE	0.430
DELTA-3-CARENE	0.320
BETA-MYRCENE	3.720
ALPHA-PHELLANDRENE	3.690
ORTHO-CYMENE	0.010
ALPHA-TERPINENE	0.330
GAMMA-TERPINENE	0.440
2,3-DEHYDRO-1,8-CINEOLE	0.020
LIMONENE *	30.500
BETA-PHELLANDRENE	14.740
1,3,8-PARA-MENTHATRIENE	0.040
TRANS-BETA-OCIMENE	0.030
ISOVALERATE D'ISOAMYLE	0.060
PARA-CYMENE	1.350
2-METHYLBUTYRATE DE 2-METHYLBUTYLE	0.030
TERPINOLENE	1.090
ISOVALERATE D'AMYLE	0.040
3-HEXEN-1-OL	0.040
ORTHO-METHYLANISOLE	0.010
ALPHA-PARA-DIMETHYLSTYRENE	0.050
BETA-THUJONE	0.040
TRANS-EPOXYDE DE LIMONENE	0.010
ALPHA-CUBEBENE	0.040
ACETATE DE FENCHYLE	0.040
ALPHA-COPAENE	0.060
BETA-BOURBONENE	0.030
LINALOL *	0.170
TRANS-PARA-MENTH-2-EN-1-OL	0.160



CIS-PARA-MENTH-2-EN-1-OL	0.100
EPSILON-CADINENE	0.020
DELTA-CADINENE	1.390
GAMMA-CADINENE	0.470
T-CADINOL	0.240
DELTA-CADINOL	0.040
ALPHA-CADINOL	0.230
ACETATE DE BORNYLE	0.330
THYMOL METHYL ETHER	0.370
THYMOL	0.010
BETA-ELEMENE	0.770
ELEMOL	0.380
BETA-CARYOPHYLLENE*	0.560
ALPHA-CARYOPHYLLENE	0.440
OXYDE DE CARYOPHYLLENE	0.050
TERPINENE-4-OL	0.660
CARVACROL METHYL-ETHER	0.060
ACETATE DE LAVANDULYLE	0.110
TRANS-PINOCARVEOL	0.020
CARVONE	0.030
CIS-CARVEOL	0.040
CARVACROL	0.030
GERMACRENE A	0.130
GERMACRENE D	1.080
BICYCLOGERMACRENE	0.140
GERMACRENE B	0.390
ZONARENE	0.070
ACETATE DE CITRONELLYLE	0.620
CRYPTONE	0.210
CIS-MUUIROLA-3,5-DIENE	0.080
GAMMA-MUUIROLENE	0.200
ALPHA-MUUIROLENE	0.420
GAMMA-SELINENE	0.070
BETA-SELINENE	0.290
ALPHA-SELINENE	0.230
ACETATE DE MYRTENYLE	1.140
ACETATE DE TERPENYLE	8.930



ALPHA-TERPINEOL	1.530
BORNEOL	0.050
PELLANDRAL	0.050
PIPERITONE	0.020
TRANS-PIPERITOL	0.140
CIS-ACETATE DE MYRTANYLE	0.200
ACETATE DE GERANYLE*	0.120
GERANIOL *	0.050
(E)-GERANYLACETONE	0.030
CITRONELLOL	0.510
CUMINAL	0.030
MYRTENOL	0.240
CADINA-1,4-DIENE	0.080
ALPHA-AMORPHENE	0.18
CALAMENENE	0.08
ALPHA-CALACORENE	0.02
PARA-CYMENE-8-OL	0.04
EPI-CUBEBOL	0.02
CUBEBOL	0.01
EPI-CUBENOL	0.05
CUBENOL	0.05
EPOXY-6,7-HUMULENE	0.04
NEROLIDOL	0.28
GERMACRENE-D-4-OL	0.09
CUMINOL	0.02
SPATHULENOL	0.07
ALPHA-MUUROLOL	0.12
ALPHA-EUDESOL	0.12
BETA-EUDESOL	0.12
EUDESMA-7(11)-EN-4-OL	0.03
ACETATE DE FARNESYLE	0.05
DITERPENE	0.04
OXYDE DE MANOYLE	0.02
FARNESOL*	0.38
DITERPENE	0.02
ABIETATRIENE	0.02
EPI-MANOL	0.03



SESQUITERPENE	0.41
SESQUITERPENOL	0.06
Total	98.33

* = Substance(s) allergène(s) / allergen(s)
 ** = Substance(s) classée(s) CMR / Substance(s) classified as CMR

FLORIHANA

