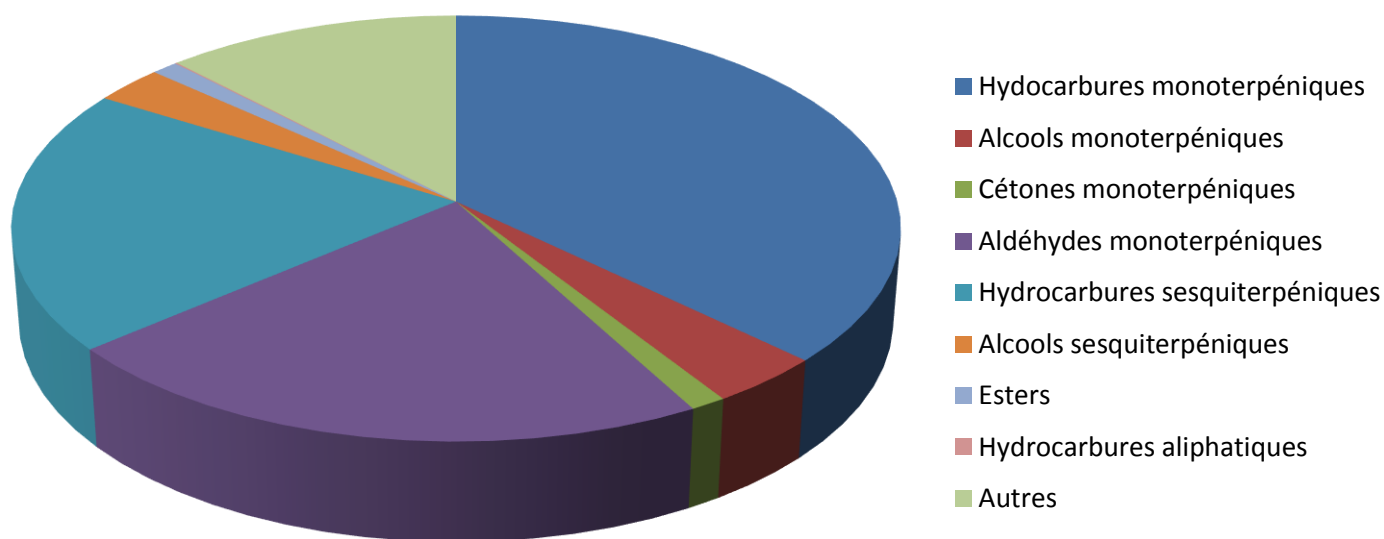


 Florihana	ENREGISTREMENT DES BULLETINS ANALYTIQUES : CHROMATOGRAPHIE ESSENTIAL OIL CHROMATOGRAPHY SHEET RECORDS	FORM-LAB005-B	Page 1 sur 4
JE INTERNATIONAL		Date d'entrée en vigueur / taking effect : 10/06/2011	

Date	:	07/12/2016
Référence produit / Product reference	:	FLE094
Huile essentielle de / Essential oil of	:	Verveine / Lemon Verbena
Numéro de lot / Lot Number	:	H231116MA
Densité à 20°C (g/cm ³) / Density to 20°C (g/cm ³)	:	0.8901
Indice de réfraction / Refractive index	:	1.48247
Pouvoir rotatoire à 20°C / Optical rotation to 20°C	:	-23.55
Mode de culture / Culture mode	:	Cultivé / Cultivated
Pays / Country	:	Maroc / Morocco
Date de production / Production date	:	08/2016
D.L.U. / Shelf life	:	09/2021
Mode d'extraction / Extraction mode	:	Distillation à la vapeur / Steam distillation
% Bio / % Organic	:	100% Bio / 100% Organic
Nom Latin / Latin Name	:	Lippia Citriodora
Parties utilisées / Used Parts	:	Sommités Fleuries / Flowering Tops



Molécule	%
ALPHA-THUJENE	0.120
ALPHA-PINENE	1.141
SABINENE	2.540
BETA-PINENE	0.169
OCTENE-3-OL	0.053
6-METHYL-5-HEPTENE-2-ONE	1.714
MYRCENE	0.542
ALPHA-PHELLANDRENE	0.072
ALPHA-TERPINENE	0.084
PARA-CYMENE	0.083
LIMONENE *	21.708
1,8-CINEOLE (EUCALYPTOL)	5.863
(Z)-BETA-OCIMENE	0.188
(E)-BETA-OCIMENE	2.227
GAMMA-TERPINENE	0.137
CIS-HYDRATE DE SABINENE	0.312
3-METHYL-2(2-METHYLBUTENYL)-FURAN	0.128
LINALOL *	0.396
TRANS-PRA-MENTHA-2,8-DIENE-1-OL	0.592
7-METHYL-2-METHYLENE-6-OCTENAL	0.134
CITRONELLAL	0.282

Molécule	%
ISO-NERAL	0.607
TRANS-CARVEOL	0.121
BORNEOL	0.124
ISO-GERANIAL	1.049
ALPHA-TERPINEOL	1.183
ROSE-FURAN EPOXYDE	0.083
NEROL	0.624
NERAL *	9.849
GERANIOL *	0.619
PIPERITONE	0.102
CARVONE	0.234
GERANIAL *	12.726
BETA-COPAENE	0.146
ACETATE DE GERANYLE+ALPHA-COPAENE	1.564
BETA-BOURBONENE	0.774
ACETATE DE BORNYLE	0.019
2-UNDECANONE	0.054
ALPHA-CEDRENE	0.459
BETA-CARYOPHYLLENE	4.409
ALPHA-HUMULENE	0.344
ALLO-AROMADENDRENE	0.692

Molécule	%
PROPANOATE DE GERANYLE	0.164
Ar-CURCUMENE + GERMACRENE D	6.777
ZINGIBERENE	0.803
BICYCLOGERMACRENE	2.313
BICYCLOELEMENE	0.108
BETA-CURCUMENE	1.119
GAMMA-CADINENE	0.247
DELTA-CADINENE	0.564
BETA-CEDRENE	0.271
BETA-SESQUIPHELLANDRENE	0.088
(E)-NEROLIDOL	0.705
SPATHULENOL	1.921
OXYDE DE CARYOPHYLLENE	3.539
EPI-ALPHA-CADINOL	0.477
Total	93.363

* = Substance(s) allergène(s) / allergen(s)

** = Substance(s) classée(s) CMR / Substance(s) classified as CMR

