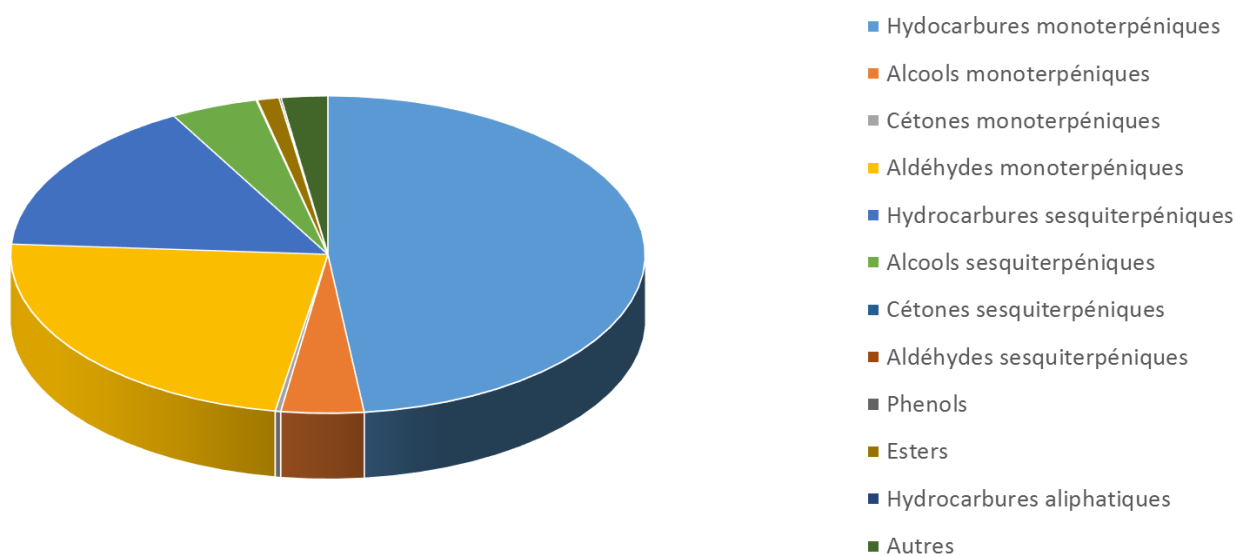


 FLORIHANA	ENREGISTREMENT DES BULLETINS ANALYTIQUES : CHROMATOGRAPHIE ESSENTIAL OIL CHROMATOGRAPHY SHEET RECORDS	FORM-LAB005-B	Page 1 sur 3
JE INTERNATIONAL		Date d'entrée en vigueur / taking effect : 10/06/2011	

Date	:	09/02/2021
Référence produit / Product reference	:	FLE094
Huile essentielle de / Essential oil of	:	Verveine odorante / Lemon Verbena
Numéro de lot / Lot Number	:	H090221MA
Densité à 20°C (g/cm ³) / Density to 20°C (g/cm ³)	:	0.8893
Indice de réfraction / Refractive index	:	1.48011
Pouvoir rotatoire à 20°C / Optical rotation to 20°C	:	-22.94°
Mode de culture / Culture mode	:	Cultivé / Cultivated
Pays / Country	:	Maroc / Morocco
Date de production / Production date	:	09/2020
D.L.U. / Shelf life	:	10/2025
Mode d'extraction / Extraction mode	:	Distillation à la vapeur / Steam distillation
% Bio / % Organic	:	100%
Nom Latin / Latin Name	:	Lippia Citriodora
Parties utilisées / Used Parts	:	Feuilles / Leaves



 FLORIHANA	ENREGISTREMENT DES BULLETINS ANALYTIQUES : CHROMATOGRAPHIE ESSENTIAL OIL CHROMATOGRAPHY SHEET RECORDS	FORM-LAB005-B	Page 2 sur 3
JE INTERNATIONAL		Date d'entrée en vigueur / taking effect : 10/06/2011	

Molécule	%
2-METHYL-BUTANOATE DE METHYLE	0.307
ALPHA-THUJENE	0.175
ALPHA-PINENE	1.514
CAMPHENE	0.019
SABINENE	3.145
BETA-PINENE	0.188
1-OCTEN-3-OL	0.038
6-METHYL-5-HEPTENE-2-ONE	1.984
BETA-MYRCENE	0.471
DEHYDRO-1,8-CINEOLE	0.102
ALPHA-PHELLANDRENE	0.073
BETA-PHELLANDRENE	0.035
ALPHA-TERPINENE	0.097
GAMMA-TERPINENE	0.173
TERPINOLENE	0.090
PARA-CYMENE	0.122
LIMONENE *	23.621
1,8-CINEOLE (EUCALYPTOL)	8.176
CIS-BETA-OCIMENE	0.275
TRANS-BETA-OCIMENE	2.862
BERGAMAL	0.043
CIS-HYDRATE DE SABINENE	0.516
TRANS-HYDRATE DE SABINENE	0.074
PARA-CYMENENE	0.138
LINALOL *	0.310
NONANAL	0.045
PHOTO-CITRAL B	0.335
EPI-PHOTO-CITRAL A	0.353
PHOTO-CITRAL A	0.957
CIS-ISOCITRAL	0.454
TRANS-ISOCITRAL	0.677
ROSEFURAN EPOXIDE	0.153
DELTA-TERPINEOL	0.128
TERPINENE-4-OL	0.281
ALPHA-TERPINEOL	1.514
NEROL	0.255



 FLORIHANA	ENREGISTREMENT DES BULLETINS ANALYTIQUES : CHROMATOGRAPHIE ESSENTIAL OIL CHROMATOGRAPHY SHEET RECORDS	FORM-LAB005-B	Page 3 sur 3
JE INTERNATIONAL		Date d'entrée en vigueur / taking effect : 10/06/2011	

NERAL *	8.300
CITRONELLOL *	0.099
GERANIOL *	0.411
GERANIAL *	10.535
ACETATE DE GERANYLE	0.641
PIPERITENONE	0.241
BICYCLOELEMENE	0.204
BETA-ELEMENE	0.210
BETA-BOURBONENE	0.811
ALPHA-COPAENE	0.760
BETA-COPAENE	0.164
SESQUITHUJENE	0.112
METHYL EUGENOL **	0.047
ALPHA-GURJUNENE	0.096
ALPHA-CEDRENE	0.463
BETA-CEDRENE	0.241
BETA-CARYOPHYLLENE	5.041
ALPHA-CARYOPHYLLENE	0.401
OXYDE DE CARYOPHYLLENE	2.966
ALPHA-TRANS-BERGAMOTENE	0.062
TRANS-BETA-FARNESENE	0.182
ALLO-AROMADENDRENE	0.855
BETA-ACORADIENE	0.201
GAMMA-MUUROLENE	0.260
Ar-CURCUMENE	4.322
GERMACRENE D	2.012
BICYCLOGERMACRENE	0.733
BETA-BISABOLENE	1.506
BETA-CURCUMENE	0.989
GAMMA-CADINENE	0.255
DELTA-CADINENE	0.489
(E)-NEROLIDOL	0.467
EPI-ALPHA-CADINOL	0.367
Total	94.143

* = Substance(s) allergène(s) / allergen(s)

** = Substance(s) classée(s) CMR / Substance(s) classified as CMR

