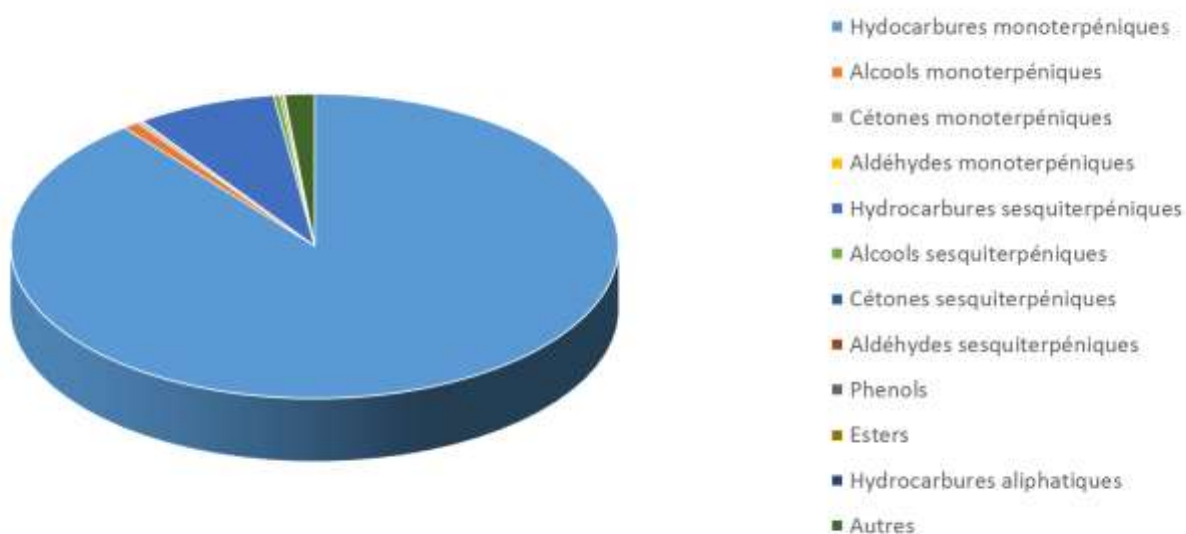


 <b>FLORIHANA</b> JE INTERNATIONAL	<b>ENREGISTREMENT DES BULLETINS ANALYTIQUES : CHROMATOGRAPHIE ESSENTIAL OIL CHROMATOGRAPHY SHEET RECORDS</b>	7-2-ENR-005 v3	Page 1 sur 4
		Date d'application : 01/01/2013	
		Date de révision : 15/04/2022	

Date : 15/11/2023  
 Référence produit / Product reference : FLE071  
 Huile essentielle de / Essential oil of : Pin Sylvestre / Scots Pine  
 Numéro de lot / Lot Number : A131123F  
 Densité à 20°C (g/cm<sup>3</sup>) / Density to 20°C (g/cm<sup>3</sup>) : 0.8670  
 Indice de réfraction / Refractive index : 1.47286  
 Pouvoir rotatoire à 20°C / Optical rotation to 20°C : -8.34°  
 Mode de culture / Culture mode : Sauvage / Wild  
 Pays / Country : France  
 Date de production / Production date : 10/2023  
 D.L.U. / Shelf life : 11/2028  
 Mode d'extraction / Extraction mode : Distillation à la vapeur / Steam distillation  
 % Bio / % Organic : 100%  
 Nom Latin / Latin Name : Pinus Sylvestris  
 Parties utilisées / Used Parts : Aiguilles / Needles



Molécule	%
HEXANAL	0.150
TRICYCLEN	0.380
ALPHA-THUJENE	0.070
<b>ALPHA-PINENE</b>	54.800
<b>BETA-PINENE</b>	20.340
FENCHENE	0.050
CAMPHENE	1.970
THUJA-2,4(10)-DIENE	0.090
SABINENE	0.200
BETA-MYRCENE	3.690
DELTA-3-CARENE	2.710
ALPHA-TERPINENE	0.040
GAMMA-TERPINENE	0.090
<b>TERPINOLENE</b>	0.530
TERPINENE-4-OL	0.140
<b>ALPHA-TERPINEOL</b>	0.530
ACETATE D'ALPHA-TERPINYLE	0.030
PARA-CYMENE	0.100
<b>LIMONENE *</b>	3.330
BETA-PHELLANDRENE	0.820
ALPHA-PHELLANDRENE	0.030
1,8-CINEOLE (EUCALYPTOL)	0.010
TRANS-BETA-OCIMENE	0.330
CIS-BETA-OCIMENE	0.030
FENCHONE	0.070
ENDO-FENCHOL	0.040
NONANAL	0.070
ALPHA-CAMPHOLENAL	0.070
CIS-PINOCAMPHONE	0.070
TRANS-PINOCAMPHONE	0.060
<b>CAMPBRE</b>	0.070
TRANS-PINOCARVEOL	0.140
PINOCARVONE	0.040
ACETATE DE BORNYLE	0.130
BICYCLOELEMENE	0.030
ALPHA-CUBEENE	0.060



ALPHA-LONGIPINENE	0.030
ISO-LONGIFOLENE	0.020
LONGIFOLENE	0.210
ALPHA-YLANGENE	0.030
BETA-YLANGENE	0.140
ALPHA-COPAENE	0.120
BETA-COPAENE	0.070
BETA-BOURBONENE	0.050
<b>BETA-CARYOPHYLLENE*</b>	1.410
ALPHA-CARYOPHYLLENE	0.220
OXYDE DE CARYOPHYLLENE	0.070
BETA-CEDRENE	0.090
CIS-THUJOPSENE	0.950
GUAIA-6,9-DIENE	0.150
TRANS-BETA-FARNESENE	0.020
CIS-MUUROLA-3,5-DIENE	0.030
TRANS-MUUROLA-4(14),5-DIENE	0.100
GAMMA-MUUROLENE	0.280
EPI-ALPHA-MUUROLOL	0.050
ALPHA-MUUROLOL	0.010
TRANS-CADINA-1,(6)4-DIENE	0.050
GAMMA-CADINENE	0.460
DELTA-CADINENE	1.040
TRANS-CADINA-1,4-DIENE	0.030
ALPHA-CADINENE	0.050
EPI-ALPHA-CADINOL	0.050
ALPHA-CADINOL	0.070
ALPHA-AMORPHENE	<b>0.020</b>
DELTA-AMORPHENE	0.020
GERMACRENE D	0.970
BETA-SELINENE	0.160
CUPARENE	0.120
CIS-CALAMENENE	0.040
ZONARENE	0.030
1-ENDO-BOURBONANOL	0.010
SPATHULENOL	0.080
<b>Total</b>	<b>98.560</b>



 <b>FLORIHANA</b> JE INTERNATIONAL	<b>ENREGISTREMENT DES BULLETINS ANALYTIQUES : CHROMATOGRAPHIE ESSENTIAL OIL CHROMATOGRAPHY SHEET RECORDS</b>	7-2-ENR-005 v3	Page 4 sur 4
		Date d'application : 01/01/2013	
		Date de révision : 15/04/2022	

- \* = Substance(s) allergène(s) / allergen(s)
- \*\* = Substance(s) classée(s) CMR / Substance(s) classified as CMR

FLORIHANA

