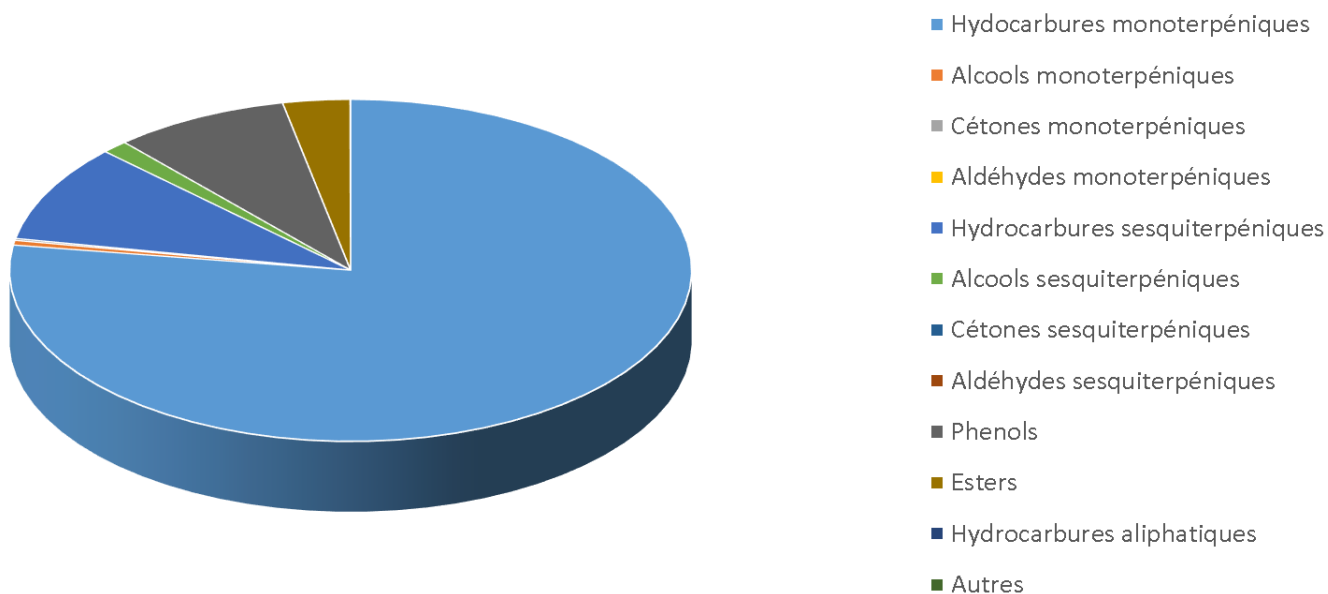



 <b>JE INTERNATIONAL</b>	<b>ENREGISTREMENT DES BULLETINS ANALYTIQUES : CHROMATOGRAPHIE ESSENTIAL OIL CHROMATOGRAPHY SHEET RECORDS</b>	<b>FORM-LAB005-B</b>	<b>Page 1 sur 3</b>
		<b>Date d'entrée en vigueur / taking effect : 10/06/2011</b>	

Date : 28/01/2019  
 Référence produit / Product reference : FLE028  
 Huile essentielle de / Essential oil of : CYPRES / CYPRESS  
 Numéro de lot / Lot Number : A280119F  
 Densité à 20°C (g/cm<sup>3</sup>) / Density to 20°C (g/cm<sup>3</sup>) : 0.8722  
 Indice de réfraction / Refractive index : 1.47339  
 Pouvoir rotatoire à 20°C / Optical rotation to 20°C : 20.9  
 Mode de culture / Culture mode : SAUVAGE / WILD  
 Pays / Country : FRANCE  
 Date de production / Production date : 01/2019  
 D.L.U. / Shelf life : 02/2024  
 Mode d'extraction / Extraction mode : Distillation à la vapeur / Steam distillation  
 % Bio / % Organic : 100%  
 Nom Latin / Latin Name : Cupressus sempervirens  
 Parties utilisées / Used Parts : Rameaux / Branches



Molécule	%
CYCLOFENCHENE	0.01
BORNYLENE	0.03
TRICYCLENE	0.34
ALPHA-PINENE	49.62
ALPHA-THUYENE	0.39
ALPHA-FENCHENE	0.53
CAMPHENE	0.35
BETA-PINENE	1.44
SABINENE	0.98
DELTA-3-CARENE	12.56
BETA-MYRCENE	2.75
ALPHA-PHELLANDRENE	0.05
ALPHA-TERPINENE	0.27
ISOSYLVESTRENE	0.11
<b>LIMONENE *</b>	2.93
BETA-PHELLANDRENE	0.31
GAMMA-TERPINENE	0.40
TRANS-BETA-OCIMENE	0.06
META-CYMENE	0.02
PARA-CYMENE	0.25
ISOTERPINOLENE	0.11
ALPHA-TERPINOLENE	2.44
PARA-CYMENENE	0.13
ALPHA-CUBEBENE	0.57
ALPHA-YLANGENE	0.03
ALPHA-COPAENE	0.17
CAMPHRE	0.17
KARAHANAENONE	0.05
<b>LINALOL *</b>	0.03
ALPHA-CEDRENE	0.55
EPSILON-CADINENE	0.72
ACETATE DE BORNYLE	1.48
BETA-ELEMENE	0.3
BETA-CARYOPHYLLENE	0.89
CARVACROL METHYL-ETHER	7.85
TERPINENE-4-OL	0.18

 <b>JE INTERNATIONAL</b>	<b>ENREGISTREMENT DES BULLETINS ANALYTIQUES : CHROMATOGRAPHIE ESSENTIAL OIL CHROMATOGRAPHY SHEET RECORDS</b>	<b>FORM-LAB005-B</b>	<b>Page 3 sur 3</b>
		<b>Date d'entrée en vigueur / taking effect : 10/06/2011</b>	

ACETATE DE 1-TERPINENE-4-YLE	0.53
CIS-THUYOPSENE	0.06
CADINA-3,5-DIENE	0.18
TRANS-PINOCARVEOL	0.09
ALPHA-CARYOPHYLLENE	0.49
CIS-MUUIROLA-4.5-DIENE	0.23
FORMIATE DE TERPINYLE	0.21
GAMMA-MUUIROLENE	0.43
ACETATE DE TERPENYLE	1.32
ALPHA-TERPINEOL	0.10
GERMACRENE D	3.04
ALPHA-MUUIROLENE	0.23
DELTA-CADINENE	0.80
PARA-CYMENE-8-OL	0.02
OXYDE DE CARYOPHYLLENE	0.02
ISOVALERATE DE DECADIENYLE	0.03
CEDROL	1.13
TAU-CADINOL	0.02
CARVACROL	0.05
ALPHA-CADINOL	0.05
ISOPIMARADIENE	0.09
ABIETATRIENE	0.05
MANOOL	0.05
<b>Total</b>	<b>98.290</b>

\* = Substance(s) allergène(s) / allergen(s)

\*\* = Substance(s) classée(s) CMR / Substance(s) classified as CMR

