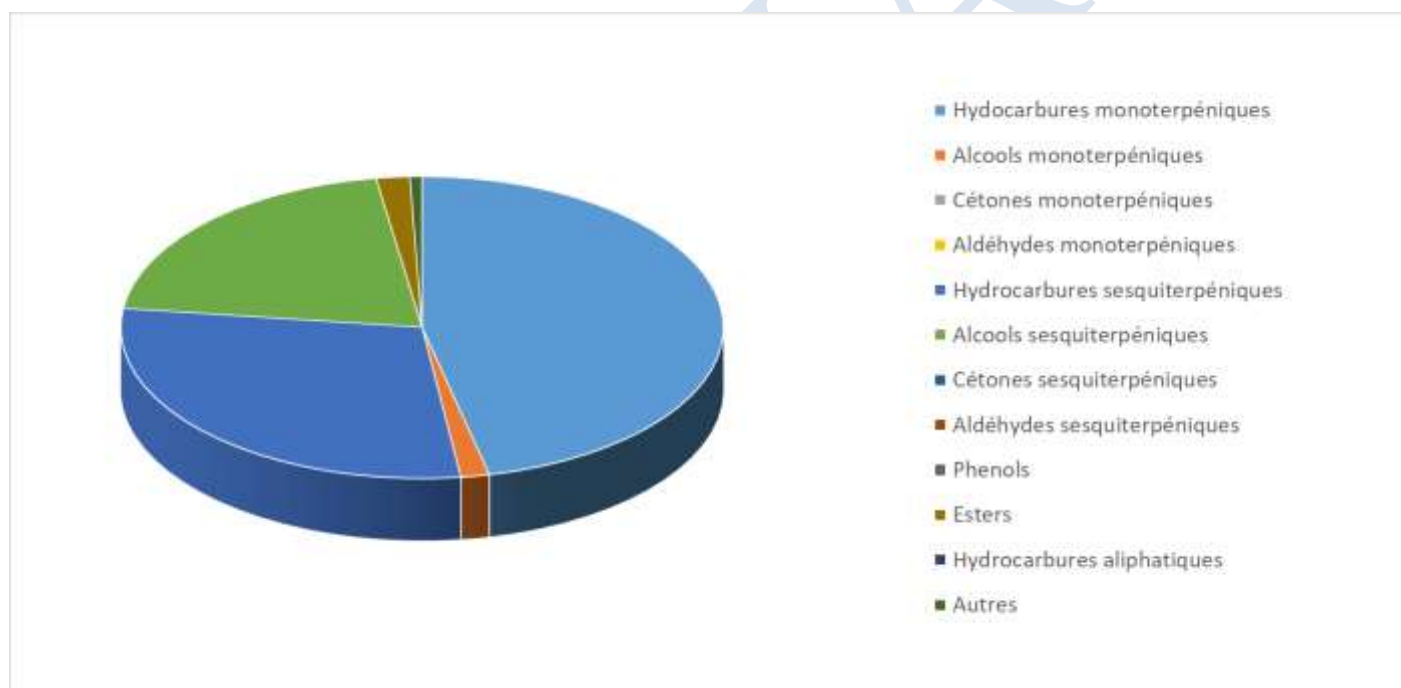


 FLORIHANA JE INTERNATIONAL	ENREGISTREMENT DES BULLETINS ANALYTIQUES : CHROMATOGRAPHIE ESSENTIAL OIL CHROMATOGRAPHY SHEET RECORDS	7-2-ENR-005 v3	Page 1 sur 3
		Date d'application : 01/01/2013	
		Date de révision : 15/04/2022	

Date : 23/05/2025
 Référence produit / Product reference : FLJ002
 Huile essentielle de / Essential oil of : Hinoki
 Numéro de lot / Lot Number : R220525JP
 Densité à 20°C (g/cm³) / Density to 20°C (g/cm³) : 0.892
 Indice de réfraction / Refractive index : 1.482
 Pouvoir rotatoire à 20°C / Optical rotation to 20°C : 28.43°
 Mode de culture / Culture mode : Sauvage / Wild
 Pays / Country : Japon / Japan
 Date de production / Production date : 02/2025
 D.L.U. / Shelf life : 03/2030
 Mode d'extraction / Extraction mode : Distillation à la vapeur / Steam distillation
 Nom Latin / Latin Name : Chamaecyparis obtusa
 Parties utilisées / Used Parts : Bois / Wood





Molécule	%
TRICYCLEN	0.201
ALPHA-THUJENE	0.086
ALPHA-PINENE	42.296
BETA-PINENE	0.636
ALPHA-FENCHENE	0.041
CAMPHENE	0.206
SABINENE	0.102
BETA-MYRCENE	0.979
ALPHA-TERPINENE	0.071
GAMMA-TERPINENE	0.101
TERPINOLENE	0.509
TERPINENE-4-OL	0.519
ALPHA-TERPINEOL	0.441
PARA-CYMENE	0.147
LIMONENE *	1.202
PARA-CYMENENE	0.045
BORNEOL	0.308
MYRTENOL	0.066
CITRONELLOL	0.192
ACETATE DE BORNYLE	0.491
ACETATE D'ALPHA-TERPINYLE	1.287
ALPHA-COPAENE	0.390
ACETATE DE GERANYLE*	0.019
CIS-BETA-ELEMENE	0.069
TRANS-BETA-ELEMENE	2.011
BETA-CUBEBENE	0.032
EPI-CUBEBOL	0.361
BETA-CARYOPHYLLENE*	0.263
ALPHA-CARYOPHYLLENE	0.364
CIS-MUUROLA-3,5-DIENE	0.071
CIS-MUUROLA-4(14),5-DIENE	0.318
TRANS-MUUROLA-3,5-DIENE	0.108
TRANS-MUUROLA-4(14),5-DIENE	0.408
ALPHA-MUUROLENE	3.369
EPI-ALPHA-MUUROLOL	4.836
CIS-CADINA-1,(6)4-DIENE	0.501
TRANS-CADINA-1,(6)4-DIENE	2.261

GAMMA-CADINENE	5.577
DELTA-CADINENE	9.655
TRANS-CADINA-1,4-DIENE	0.158
ALPHA-CADINENE	0.747
EPI-ALPHA-CADINOL	4.136
DELTA-CADINOL	1.606
ALPHA-CADINOL	7.641
GERMACRENE D	0.786
BETA-SELINENE	0.405
ALPHA-SELINENE	0.595
SELIN-11-ENE-4-ALPHA-OL	0.310
CUBEBOL	0.294
TRANS-CALAMENENE	0.214
ALPHA-CALACORENE	0.137
BETA-CALACORENE	0.048
ZONARENE	0.365
NEROLIDOL	0.379
GERMACRENE-D-4-OL	0.137
GLEENOL	0.187
VIRIDIFLOROL	0.060
1,10-DI-EPI-CUBENOL	0.406
1-EPI-CUBENOL	0.694
HINESOL	0.101
Total	99.945

* = Substance(s) allergène(s) / allergen(s)

** = Substance(s) classée(s) CMR / Substance(s) classified as CMR