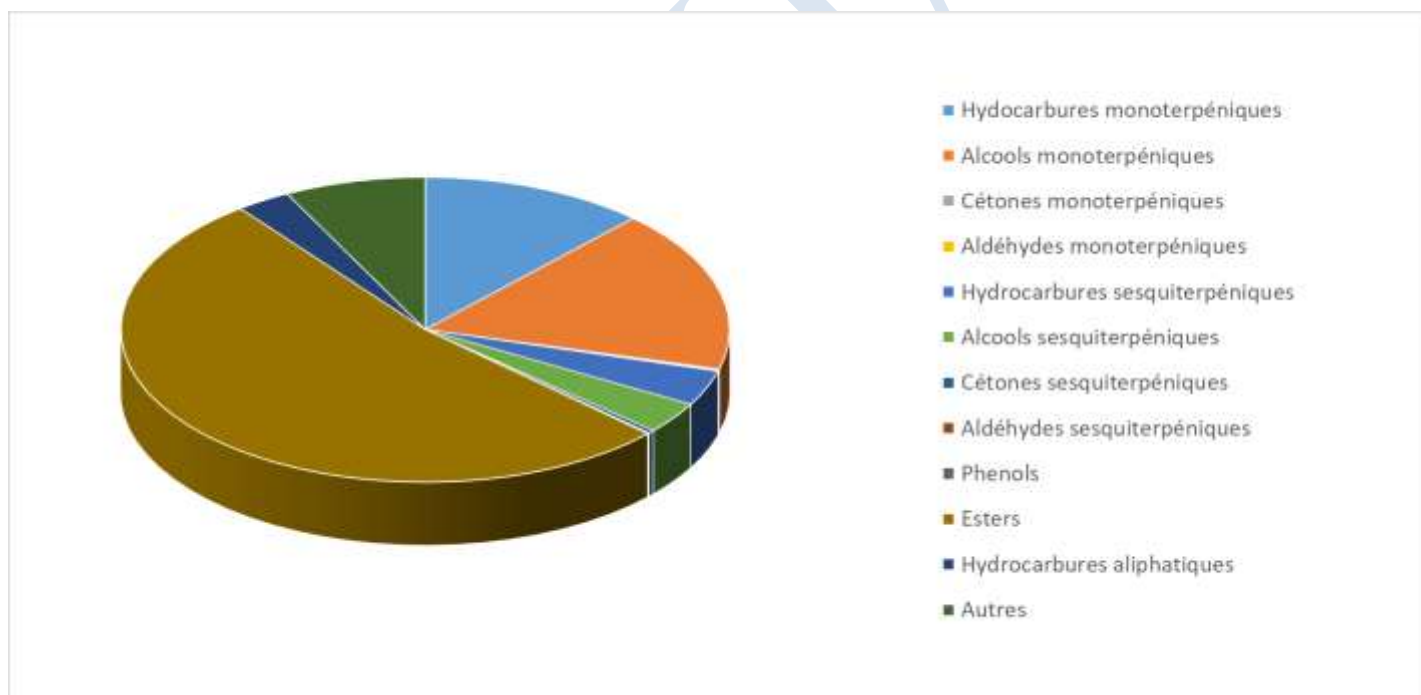


 FLORIHANA JE INTERNATIONAL	ENREGISTREMENT DES BULLETINS ANALYTIQUES : CHROMATOGRAPHIE ESSENTIAL OIL CHROMATOGRAPHY SHEET RECORDS	7-2-ENR-005 v3	Page 1 sur 4
		Date d'application : 01/01/2013	
		Date de révision : 15/04/2022	

Date : 16/01/2025
 Référence produit / Product reference : FLE104
 Huile essentielle de / Essential oil of : Inule / Inula
 Numéro de lot / Lot Number : F080125F
 Densité à 20°C (g/cm³) / Density to 20°C (g/cm³) : 0.9696
 Indice de réfraction / Refractive index : 1.4772
 Pouvoir rotatoire à 20°C / Optical rotation to 20°C : -28.08
 Mode de culture / Culture mode : Sauvage / Wild
 Pays / Country : France
 Date de production / Production date : 10/2024
 D.L.U. / Shelf life : 11/2029
 Mode d'extraction / Extraction mode : Distillation à la vapeur / Steam distillation
 % Bio / % Organic : 100%
 Nom Latin / Latin Name : Inula graveolens
 Parties utilisées / Used Parts : Plante Fleurie / Flowering plant





Molécule	%
1-METHYL-4-(1-METHYLETHYLIDENE)-CYCLOHEXANE	0.020
ALPHA-PINENE	0.400
BETA-PINENE	0.960
CAMPHENE	6.710
DELTA-3-CARENE	0.030
BETA-MYRCENE	0.200
ALPHA-PHELLANDRENE	0.090
ALPHA-TERPINENE	0.060
GAMMA-TERPINENE	0.1
TERPINENE-4-OL	0.13
ALPHA-TERPINEOL	1.04
2,3-DEHYDRO-1,8-CINEOLE	2.04
LIMONENE *	0.920
TRANS-BETA-OCIMENE	0.020
TERPINOLENE	0.050
YOMOGI ALCOOL	0.030
SANTOLINA ALCOOL	0.100
ARTEMISIA ALCOOL	0.030
SESQUITERPENE	0.080
SESQUITERPENONE	0.330
ALPHA-PARA-DIMETHYLSTYRENE	0.080
MENTHONE	0.020
OXYDE DE NERYLE	0.020
ISO-MENTHONE	0.020
YLANGENE	0.030
ALPHA-COPAENE	0.020
CAMPBRE	0.370
LINALOL *	0.070
FORMATE DE BORNYLE	0.020
PROPIONATE DE BORNYLE	0.150
EPSILON-CADINENE	0.030
ACETATE DE BORNYLE	50.310
THYMOL METHYL ETHER	0.290
HYDRATE DE CAMPHENE	0.340
BETA-CARYOPHYLLENE*	2.710
ALPHA-CARYOPHYLLENE	0.100



OXYDE DE CARYOPHYLLENE	1.460
BENZOATE DE METHYLE	0.080
BUTYRATE DE LAVANDULYLE	0.220
MYRTENAL	0.060
CIS-PARA-MENTHA-2,8-DIENE-1-OL	0.080
TRANS-PARA-MENTHA-2,8-DIEN-1-OL	0.030
PARA-MENTHA-1(7)2-DIENE-8-OL	0.450
PARA-MENTHA-1,4-DIEN-7-AL	0.050
PARA-MENTHA-1,5-DIEN-8-OL	0.540
CIS-PARA-MENTHA-1-8-DIEN-2-OL	0.040
PULEGONE	0.030
ALLO-AROMADENDRENE	0.060
TRANS-PINOCARVEOL	0.040
ISO-BORNEOL	0.030
BORNEOL	14.510
LAVANDULAL	0.020
GAMMA-MUUROLENE	0.040
ALPHA-MUUROLOL	0.030
GERMACRENE D	0.150
BETA-SELINENE	0.210
ALPHA-SELINENE	0.040
ACETATE DE NERYLE	0.140
PROPIONATE DE NERYLE	0.090
BUTYRATE DE NERYLE	0.090
METHYLVALERATE DE NERYLE	0.340
CARVONE	0.040
ACETATE DE CIS-CARVYLE	0.130
TRANS-CARVEOL	0.030
CIS-CARVEOL	0.030
ACETATE DE CARVACRYLE	0.090
ISOVALERATE DE CARVACRYLE	0.050
TRANS-PIPERITOL	0.050
TRANS-ISOPIPERITENOL	0.020
DELTA-CADINENE	0.120
GAMMA-CADINENE	0.150
CAMPHOLENOL	0.030
NEROL	0.030



CIS-BETA-DAMASCENONE	0.040
PARA-CYMENE-8-OL	0.060
2,5-DIMETHOXY-PARA-CYMENE	0.020
ISOBUTYRATE DE GERANYLE	0.360
TIGLATE DE GERANYLE	0.040
BENZOATE DE BUTYLE	0.020
PIPERITENONE	0.030
BENZOATE D'ISOPRENYLE	0.370
BENZOATE DE PRENYLE	0.240
SALICYLATE D'ISOPRENYLE	0.110
SALICYLATE DE PRENYLE	0.140
CUBENOL	0.030
BENZOATE DE CIS-3-HEXENYLE	0.040
BENZOATE D'HEXYLE	0.120
TRIMETHYL PENTADECANONE	0.040
ISOTHYMOL	0.030
THYMOL	0.070
SESQUITERPENOL	0.050
T-CADINOL	0.640
ALPHA-CADINOL	0.050
BETA-EUDESOL	0.050
EUDESMA-7(11)-EN-4-OL	0.270
EPOXYDE SESQUITERPENIQUE	0.210
CARYOPHYLLA-2,6-DIEN-5-ALPHA-OL	0.770
PENTACOSANE	0.140
HEPTACOSANE	0.030
NONACOSANE	0.050
ACIDE PALMITIQUE	0.04
ACIDE ARTEANNUIQUE	2.7
Total	94.28

* = Substance(s) allergène(s) / allergen(s)

** = Substance(s) classée(s) CMR / Substance(s) classified as CMR

