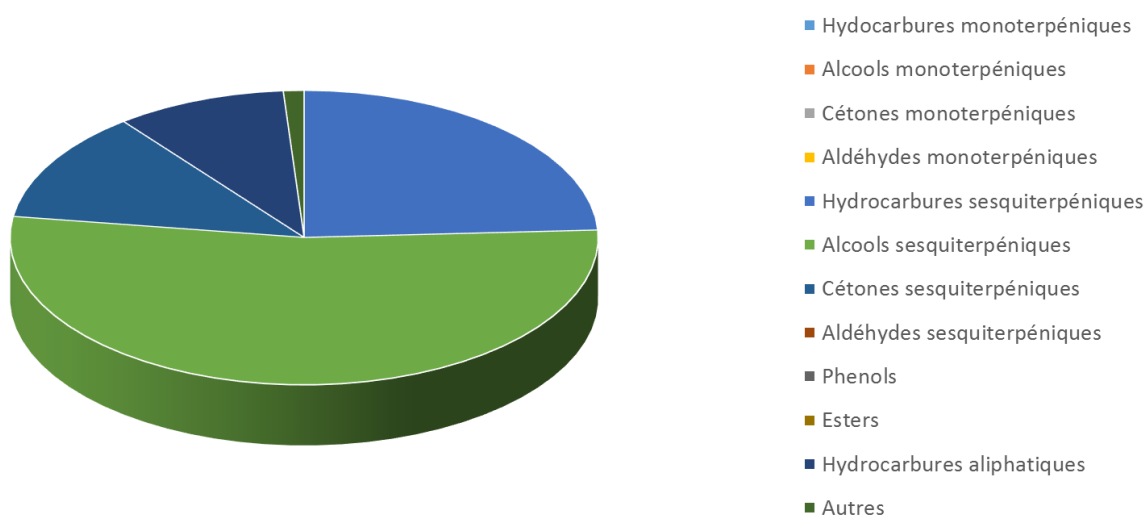



 FLORIHANA	ENREGISTREMENT DES BULLETINS ANALYTIQUES : CHROMATOGRAPHIE ESSENTIAL OIL CHROMATOGRAPHY SHEET RECORDS	FORM-LAB005-B	Page 1 sur 4
JE INTERNATIONAL		Date d'entrée en vigueur / taking effect : 10/06/2011	

Date : 25/05/2021
 Référence produit / Product reference : FLE095
 Huile essentielle de / Essential oil of : Vetiver
 Numéro de lot / Lot Number : B250521CI
 Densité à 20°C (g/cm³) / Density to 20°C (g/cm³) : 1.002
 Indice de réfraction / Refractive index : 1.5254
 Pouvoir rotatoire à 20°C / Optical rotation to 20°C : +18.5°
 Mode de culture / Culture mode : Cultive / Cultivated
 Pays / Country : Côte d'Ivoire / Ivory Coast
 Date de production / Production date : 09/2020
 D.L.U. / Shelf life : 10/2025
 Mode d'extraction / Extraction mode : Distillation à la vapeur / Steam distillation
 % Bio / % Organic : 100%
 Nom Latin / Latin Name : Vetiveria Zizanoides
 Parties utilisées / Used Parts : Racines / Roots



 FLORIHANA	ENREGISTREMENT DES BULLETINS ANALYTIQUES : CHROMATOGRAPHIE ESSENTIAL OIL CHROMATOGRAPHY SHEET RECORDS	FORM-LAB005-B	Page 2 sur 4
JE INTERNATIONAL		Date d'entrée en vigueur / taking effect : 10/06/2011	


Molécule	%
ALPHA-CUBEENE	0.020
BETA-1-CUBEENE	0.020
BETA-CUBEENE	0.060
CYCLOSATIVENE	0.070
YLANGENE	0.120
ALPHA-COPAENE	0.010
ALPHA-GURJUNENE	0.020
ARISTOLENE	0.130
BETA-CEDRENE	0.120
GUAIA-6,9-DIENE	0.130
ISOSATIVENE	0.020
PREZIZA-7-ENE	0.650
KHUSIMENE	0.670
ZONARENE	0.040
ALPHA-CARYOPHYLLENE	0.030
CIS-MUUIROLA-3.5-DIENE	0.070
GAMMA-MUUIROLENE	1.540
ALPHA-MUUIROLENE	0.060
GAMMA-CURCUMENE	0.050
CALARENE	0.540
GAMMA-SELINENE	0.070
ALPHA-SELINENE	0.940
SATIVENE	0.940
GERMACRENE D	0.180
VALENCENE	0.960
ALPHA-VETISPIRENE	1.950
SESQUICINEOLS	0.120
DELTA-CADINENE	0.300
GAMMA-CADINENE	0.050
CADINA-1,4-DIENE	0.410
DELTA-SELINENE	0.090
BETA-VETISPIRENE	0.580
DEHYDRO AROMADENDRENE	0.730
GERMACRENE B	0.040
CIS-CALAMENENE	0.060
TRANS-CALAMENENE	0.020



 FLORIHANA	ENREGISTREMENT DES BULLETINS ANALYTIQUES : CHROMATOGRAPHIE ESSENTIAL OIL CHROMATOGRAPHY SHEET RECORDS	FORM-LAB005-B	Page 3 sur 4
JE INTERNATIONAL		Date d'entrée en vigueur / taking effect : 10/06/2011	

BETA-VETIVENENE	6.350
GAMMA-VETIVENENE	0.790
SESQUITERPENE	1.670
ALPHA-AGAROFURANE	0.050
CALACORENE	0.370
BETA-CALACORENE	0.120
KHUSIMONE	0.310
CUBEBOL	0.070
METHYLENE CYCLOPENTENYLE	0.03
BENZOCYCLOHEPTENONE	0.15
LEVOJUNEVOL	0.8
OCTAHYDRO-METHYLPHENANTHRENE	0.12
ELEMOL	0.18
10-EPI-GAMMA-EUDESOL	0.340
GAMMA-EUDESOL	1.340
ALPHA-EUDESOL	0.580
BETA-EUDESOL	1.080
EUDESMA-7-EN-4-OL	0.590
ALPHA-MUUROLOL	1.710
VALERIANOL	0.710
ISOSPATHULENOL	0.460
ALPHA-CADINOL	0.910
BETA-BISABOLOL	0.620
BICYCLOVETIVENOL	1.540
ZIZANOL	1.400
VETIVENOL	0.840
VETISELINENOL	2.880
VETIVEROL	0.700
BETA-VETIVONE	3.190
ALPHA-VETIVONE	2.990
KHUSIMOL	8.690
ACIDE KHUSENIQUE	7.870
NOOTKATONE	0.550
ISOVALENCENOL	5.760
CIS-GAMMA-CURCUMENE-12-OL	1.070
EPOXYDE SESQUITERPENIQUE	1.070
SESQUITERPENOL	11.070



 FLORIHANA	ENREGISTREMENT DES BULLETINS ANALYTIQUES : CHROMATOGRAPHIE ESSENTIAL OIL CHROMATOGRAPHY SHEET RECORDS	FORM-LAB005-B	Page 4 sur 4
JE INTERNATIONAL		Date d'entrée en vigueur / taking effect : 10/06/2011	

SESQUITERPENONE

3.160

Total

83.940

* = Substance(s) allergène(s) / allergen(s)

** = Substance(s) classée(s) CMR / Substance(s) classified as CMR

