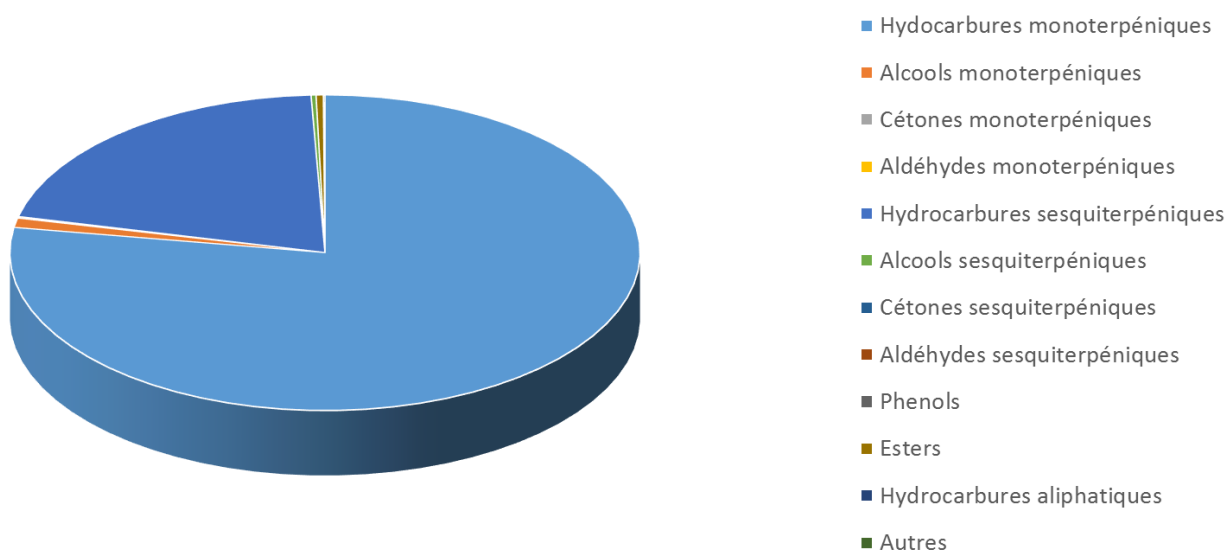



 FLORIHANA	ENREGISTREMENT DES BULLETINS ANALYTIQUES : CHROMATOGRAPHIE ESSENTIAL OIL CHROMATOGRAPHY SHEET RECORDS	FORM-LAB005-B	Page 1 sur 4
JE INTERNATIONAL		Date d'entrée en vigueur / taking effect : 10/06/2011	


Date	:	15/12/2020
Référence produit / Product reference	:	FLE070
Huile essentielle de / Essential oil of	:	Pin maritime / Pine Needle
Numéro de lot / Lot Number	:	C031220PT
Densité à 20°C (g/cm ³) / Density to 20°C (g/cm ³)	:	0.8755
Indice de réfraction / Refractive index	:	1.48036
Pouvoir rotatoire à 20°C / Optical rotation to 20°C	:	-22.94°
Mode de culture / Culture mode	:	Sauvage / wild
Pays / Country	:	Portugal
Date de production / Production date	:	11/2020
D.L.U. / Shelf life	:	12/2025
Mode d'extraction / Extraction mode	:	Distillation à la vapeur / Steam distillation
% Bio / % Organic	:	100%
Nom Latin / Latin Name	:	Pinus pinaster
Parties utilisées / Used Parts	:	Aiguilles / Needles



 FLORIHANA	ENREGISTREMENT DES BULLETINS ANALYTIQUES : CHROMATOGRAPHIE ESSENTIAL OIL CHROMATOGRAPHY SHEET RECORDS	FORM-LAB005-B	Page 2 sur 4
JE INTERNATIONAL		Date d'entrée en vigueur / taking effect : 10/06/2011	

Molécule	%
SANTENE	0.015
TRICYCLEN	0.053
ALPHA-THUJENE	0.026
ALPHA-PINENE	37.262
FENCHENE	0.039
CAMPHENE	0.491
THUJA-2,4(10)-DIENE	0.048
SABINENE	0.043
BETA-PINENE	19.323
BETA-MYRCENE	5.748
ALPHA-PHELLANDRENE	0.038
BETA-PHELLANDRENE	0.704
DELTA-3-CARENE	2.159
ALPHA-TERPINENE	0.037
GAMMA-TERPINENE	0.061
TERPINOLENE	0.584
PARA-CYMENE	0.099
PARA-CYMENENE	0.053
LIMONENE *	3.712
1,8-CINEOLE (EUCALYPTOL)	0.454
TRANS-BETA-OCIMENE	0.702
LINALOL *	0.136
ENDO-FENCHOL	0.033
TRANS-PINOCARVEOL	0.155
TRANS-PINOCAMPHONE	0.035
CAMPHE	0.012
TERPINENE-4-OL	0.042
ALPHA-TERPINEOL	0.521
MYRTENAL	0.115
THYMOL METHYL ETHER	0.075
ACETATE DE LINALYLE	0.221
ACETATE DE BORNYLE	0.066
ACETATE DE GERANYLE	0.055
ALPHA-CUBEBENE	0.371
ALPHA-LONGIPINENE	0.148
ALPHA-YLANGENE	0.166




 FLORIHANA	ENREGISTREMENT DES BULLETINS ANALYTIQUES : CHROMATOGRAPHIE ESSENTIAL OIL CHROMATOGRAPHY SHEET RECORDS	FORM-LAB005-B	Page 3 sur 4
JE INTERNATIONAL		Date d'entrée en vigueur / taking effect : 10/06/2011	

BETA-YLANGENE	0.106
ALPHA-COPAENE	0.638
BETA-COPAENE	0.243
BETA-BOURBONENE	0.071
BETA-ELEMENE	0.098
LONGIFOLENE	1.180
BETA-CARYOPHYLLENE	8.350
ALPHA-CARYOPHYLLENE	1.167
TRANS-BETA-FARNESENE	0.135
TRANS-CADINA-1,(6)4-DIENE	0.213
GAMMA-CADINENE	0.713
DELTA-CADINENE	2.129
TRANS-CADINA-1,4-DIENE	0.091
ALPHA-CADINENE	0.192
EPI-ALPHA-CADINOL	0.108
ALPHA-CADINOL	0.064
GAMMA-MUUROLENE	1.482
TRANS-MUUROLA-4(14),5-DIENE	0.217
ALPHA-MUUROLENE	0.560
ALPHA-MUUROLOL	0.036
ALPHA-AMORPHENE	0.161
GAMMA-AMORPHENE	0.257
DELTA-AMORPHENE	0.203
GERMACRENE D	4.015
3-METHYL-BUTANOATE DE PHENYL-ETHYLE	0.426
CIS-CALAMENENE	0.231
OXYDE DE CARYOPHYLLENE	0.290
ALPHA-COPAENE-OL	0.025
PALUSTRADIENE	0.227
Total	97.430

* = Substance(s) allergène(s) / allergen(s)

** = Substance(s) classée(s) CMR / Substance(s) classified as CMR



 FLORIHANA	ENREGISTREMENT DES BULLETINS ANALYTIQUES : CHROMATOGRAPHIE ESSENTIAL OIL CHROMATOGRAPHY SHEET RECORDS	FORM-LAB005-B	Page 4 sur 4
JE INTERNATIONAL		Date d'entrée en vigueur / taking effect : 10/06/2011	

FLORIHANA

