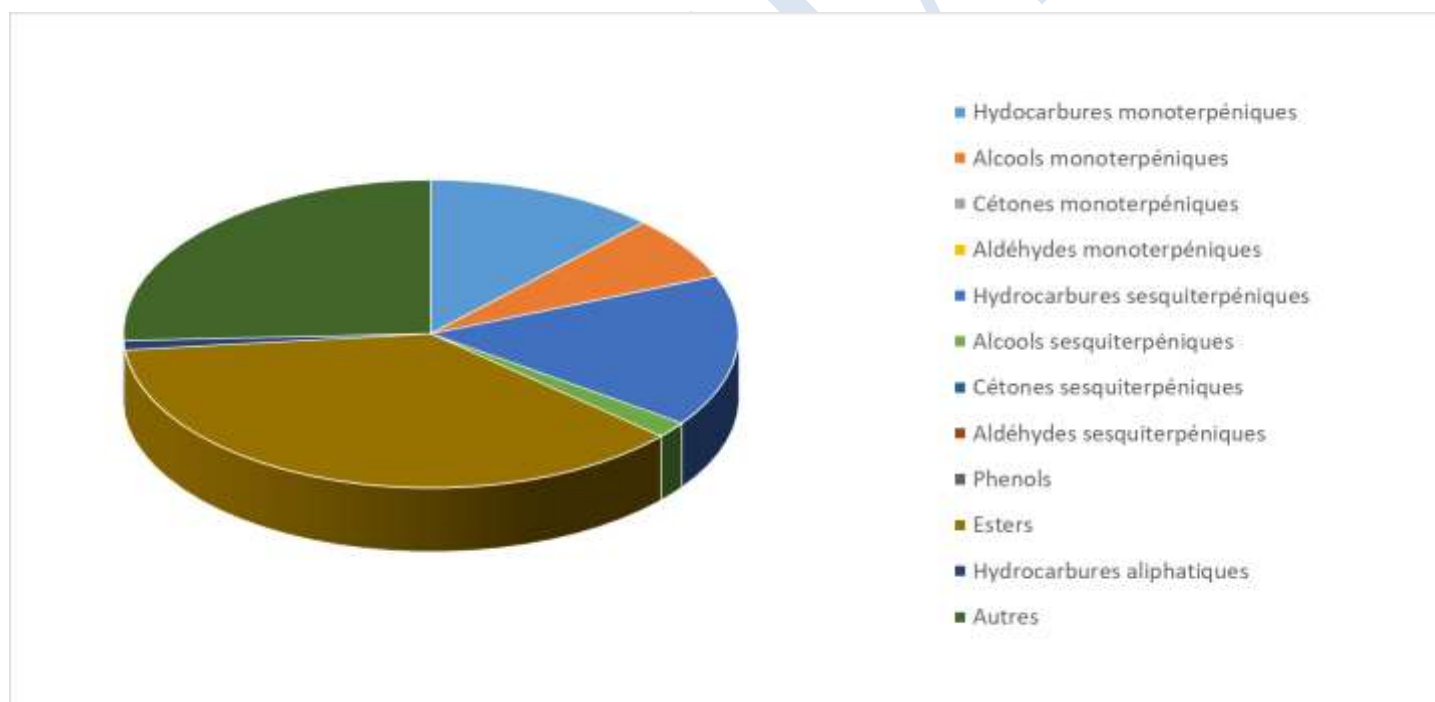


 <b>FLORIHANA</b> JE INTERNATIONAL	<b>ENREGISTREMENT DES BULLETINS          ANALYTIQUES : CHROMATOGRAPHIE          ESSENTIAL OIL CHROMATOGRAPHY          SHEET RECORDS</b>	7-2-ENR-005 v3	Page 1 sur 4
		Date d'application : 01/01/2013	
		Date de révision : 15/04/2022	

Date	:	11/07/2025
Référence produit / Product reference	:	FLE043
Huile essentielle de / Essential oil of	:	Helichryse Italienne / Helichrysum Italian
Numéro de lot / Lot Number	:	F090725F
Densité à 20°C (g/cm <sup>3</sup> ) / Density to 20°C (g/cm <sup>3</sup> )	:	0.899
Indice de réfraction / Refractive index	:	1.4697
Pouvoir rotatoire à 20°C / Optical rotation to 20°C	:	-2.5°
Mode de culture / Culture mode	:	Cultivé / Cultivated
Pays / Country	:	France
Date de production / Production date	:	06/2025
D.L.U. / Shelf life	:	07/2030
Mode d'extraction / Extraction mode	:	Distillation à la vapeur / Steam distillation
% Bio / % Organic	:	100%
Nom Latin / Latin Name	:	Helichrysum italicum
Parties utilisées / Used Parts	:	Sommités Fleuries / Flowering Tops



<b>Molécule</b>	<b>%</b>
2-METHYL-2-HEPTENE	0.330
2-METHYL-BUTANAL	0.030
3-PENTANONE	0.140
BORNYLENE	0.060
2-METHYL-3-PENTANONE	0.290
<b>ALPHA-PINENE</b>	3.850
ALPHA-THUJENE	0.020
FENCHENE	0.670
CAMPHENE	0.270
<b>CAMPBRE</b>	0.010
4-METHYL-3-HEXANONE	0.460
<b>BETA-PINENE</b>	1.120
BETA-MYRCENE	0.110
ALPHA-PHELLANDRENE	0.040
BETA-PHELLANDRENE	0.700
2-METHYLBUTYRATE D'ISOBUTYLE	0.040
2-METHYLBUTYRATE D'ISOAMYLE	0.350
<b>ALPHA-TERPINENE</b>	0.300
GAMMA-TERPINENE	1.130
TERPINENE-4-OL	0.780
<b>ALPHA-TERPINEOL</b>	0.570
<b>LIMONENE *</b>	7.320
CIS-BETA-OCIMENE	0.030
TRANS-BETA-OCIMENE	0.330
TRANS-ARBUSCULONE	0.030
PARA-CYMENE	0.350
ANGELATE D'ISOBUTYLE	0.190
ANGELATE D'ISOAMYLE	0.330
ANGELATE DE 2-METHYLBUTYLE	0.510
6-METHYL-5-HEPTENE-2-ONE	0.030
METHYLBUTYRATE DE PRENYLE	0.020
METHYL-PARA-CRESOL	0.030
OXYDE DE NERYLE	0.170
ACETATE DE NERYLE	30.720
PROPIONATE DE NERYLE	4.080
BUTYRATE DE NERYLE	0.190



2-DECANONE	0.040
ISOITALICENE	0.770
ITALICENE	1.620
ITALICENE ISOMERE	0.200
ITALIDIONE I Mw=210	8.190
ITALIDIONE III Mw=238	1.510
2,4-DIMETHYL-HEPTANE-3,5-DIONE	0.300
2-NONANOL	0.080
<b>LINALOL *</b>	3.180
SESQUITERPENE	0.240
SESQUITERPENOL	0.080
ALPHA-CIS-BERGAMOTENE	0.620
ALPHA-SANTALENE	0.020
3,5-DIMETHYLOCTANE-4.6-DIONE	0.980
FENCHOL	0.060
ALPHA-TRANS-BERGAMOTENE	0.380
ALPHA-GUAIENE	0.050
<b>BETA-CARYOPHYLLENE*</b>	0.170
HOTRIENOL	0.020
BETA-SANTALENE	0.020
LAVANDULAL	0.040
TRANS-BETA-FARNESENE	0.120
GAMMA-CURCUMENE	11.510
ALPHA-CURCUMENE	2.120
<b>ACETATE DE GERANYLE*</b>	0.070
PROPIONATE DE GERANYLE	0.020
BETA-SELINENE	0.040
ALPHA-ZINGIBERENE	0.030
BETA-BISABOLENE	0.170
BETA-CURCUMENE	0.330
SESQUICINEOLS	0.020
DELTA-CADINENE	0.110
BETA-SESQUIPELLANDRENE	0.040
MYRTENOL	0.020
NEROL	2.610
2-TRIDECANONE	0.010
TRANS-CARVEOL	0.010



<b>GERANIOL *</b>	0.040
DEHYDROCURCUMENE	0.050
NONADECANE	0.010
VALERATE DE NERYLE	0.160
ACETATE DE PERILLYLE	0.020
NEROLIDOL	0.070
GUAIOL	0.710
10-EPI-GAMMA-EUDESOL	0.060
EUDESMA-5-EN-11-ALPHA-OL	1.340
ALPHA-EUDESOL	0.350
BETA-EUDESOL	0.490
ALPHA-BISABOLOL	0.060
GAMMA-EUDESOL	0.240
TRIMETHYL PENTADECANONE	0.030
AGAROSPIROL	0.070
BULNESOL	0.180
VALERIANOL	0.020
ACIDE CAPRIQUE	0.070
ACIDE LAURIQUE	0.130
<b>Total</b>	<b>95.500</b>

\* = Substance(s) allergène(s) / allergen(s)

\*\* = Substance(s) classée(s) CMR / Substance(s) classified as CMR

