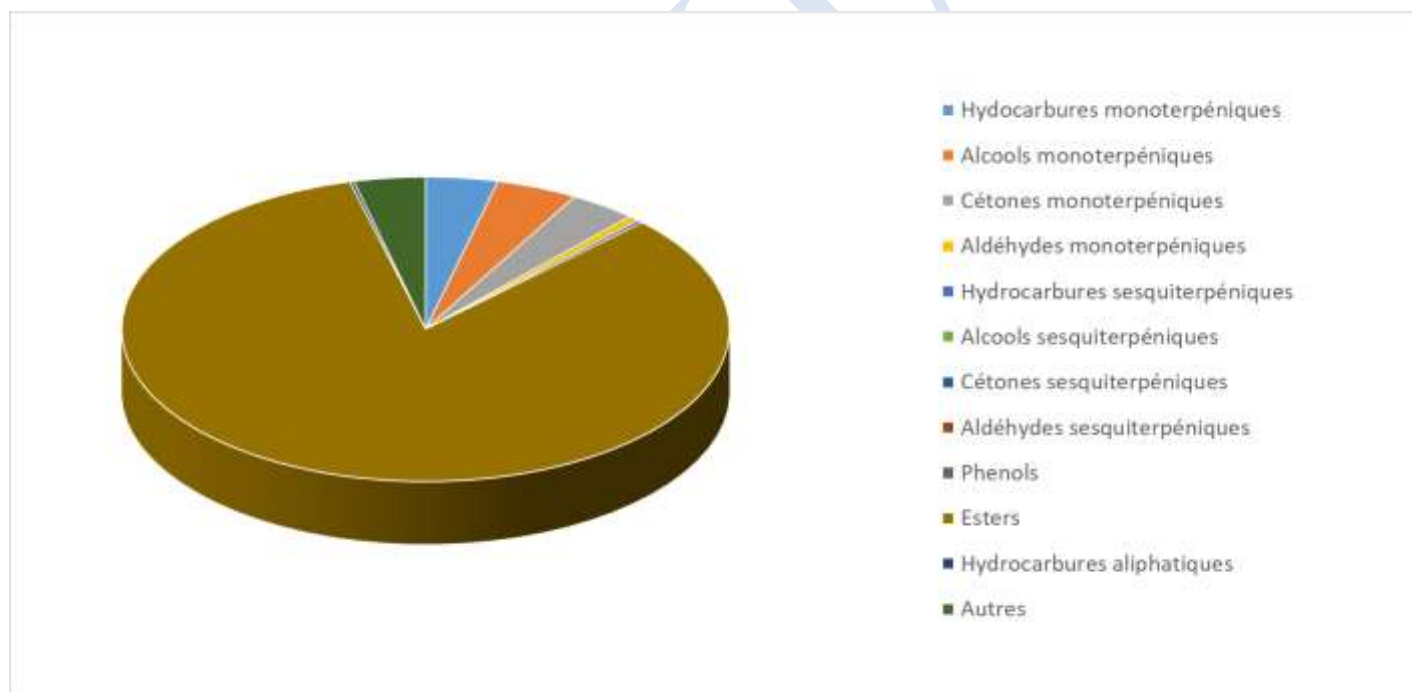


 FLORIHANA JE INTERNATIONAL	ENREGISTREMENT DES BULLETINS ANALYTIQUES : CHROMATOGRAPHIE ESSENTIAL OIL CHROMATOGRAPHY SHEET RECORDS	7-2-ENR-005 v3	Page 1 sur 3
		Date d'application : 01/01/2013	
		Date de révision : 15/04/2022	

Date : 23/10/2025
 Référence produit / Product reference : FLE014
 Huile essentielle de / Essential oil of : Camomille Romaine / Roman Chamomile
 Numéro de lot / Lot Number : W191025F
 Densité à 20°C (g/cm³) / Density to 20°C (g/cm³) : 0.9022
 Indice de réfraction / Refractive index : 1.43845
 Pouvoir rotatoire à 20°C / Optical rotation to 20°C : -0.54°
 Mode de culture / Culture mode : Cultivé / Cultivated
 Pays / Country : France
 Date de production / Production date : 08/2025
 D.L.U. / Shelf life : 09/2030
 Mode d'extraction / Extraction mode : Distillation à la vapeur / Steam distillation
 % Bio / % Organic : 100%
 Nom Latin / Latin Name : Chamaemelum nobile
 Parties utilisées / Used Parts : Plante fleurie / Flowering plant





Molécule	%
3-METHYL-BUTANOL	0.124
ACETATE D'ISOBUTYLE	0.074
2-METHYL-ACRYLATE D'ISOBUTYLE	1.669
BUTANOATE D'ISOBUTYLE	0.052
2-METHYLBUTYRATE D'ISOBUTYLE	0.788
ANGELATE D'ISOBUTYLE	32.898
TIGLATE D'ISOBUTYLE	0.480
ANGELATE DE METHYLE	0.097
ANGELATE D'ETHYLE	0.031
ANGELATE DE PROPYLE	1.636
ANGELATE DE METHALLYLE	9.431
ANGELATE DE BUTYLE	0.773
ANGELATE DE 3-METHYLBUTYLE	3.731
ANGELATE DE 2-METHYLBUTYLE	15.838
ANGELATE DE PENTYLE	0.089
ANGELATE DE 3-METHYLPENTYLE	0.155
ANGELATE DE CIS-3-HEXENYLE	0.088
ANGELATE D'HEXYLE	0.080
ANGELATE DE BENZYLE	0.037
2-METHYL-BUTANOATE D'ETHYLE	0.031
2-METHYL-PROPANOATE DE PROPYLE	0.113
PROPANOATE DE 2-METHYL-PROPYLE	0.070
2-METHYL-PROPANOATE DE 2-METHYL-PROPYLE	5.761
2-METHYLBUTANOATE DE PROPYLE	0.060
ACETATE D'ISOPENTYLE	0.109
ACETATE DE 2-METHYL-BUTYLE	0.256
ACETATE DE 2-METHYL-2-BUTENYLE	0.931
ISOBUTANOATE DE 2-METHYL-2-PROPENYLE	0.544
ALPHA-PINENE	2.921
BETA-PINENE	0.255
CAMPHENE	0.560
METACRYLATE DE 2-METHYLLALLYLE	0.480
PROPANOATE DE 2-METHYL-BUTYLE	0.044
SABINENE	0.034
ACETATE DE 3-METHYL-PENTYLE	0.042
3-METHYL-BUTANOATE DE 2-METHYL-PROPYLE	0.172



ISOBUTYRATE DE 3-METHYLBUTYLE	0.379
ISOBUTYRATE DE 2-METHYLBUTYLE	3.157
DECANE	0.088
LIMONENE *	0.024
1,8-CINEOLE (EUCALYPTOL)	0.029
2-METHYL-ACRYLATE DE 2-METHYL-BUTYLE	0.782
2-METHYL-ACRYLATE DE 3-METHYL-BUTYLE	0.136
ISOBUTYRATE DE 3-METHYL-2-BUTENYLE	0.189
METACRYLATE DE 2-METHYL-BUT-2-ENE-1-YLE	0.079
2-METHYLE-BUTANOATE DE 3-METHYL-BUTYLE	0.102
2-METHYLE-BUTANOATE DE 2-METHYL-BUTYLE	0.411
LINALOL *	0.054
TRANS-PINOCARVEOL	4.101
PINOCARVONE	3.572
HYDRATE DE CAMPHENE	0.102
2-METHYL-2-BUTENOATE DE 2-METHYL-BUT-2-ENYLE	1.289
TIGLATE D'ISOAMYLE	0.247
MYRTENAL	0.602
MYRTENOL	0.188
BETA-CARYOPHYLLENE*	0.030
GERMACRENE D	0.278
Total	96.293

* = Substance(s) allergène(s) / allergen(s)

** = Substance(s) classée(s) CMR / Substance(s) classified as CMR

