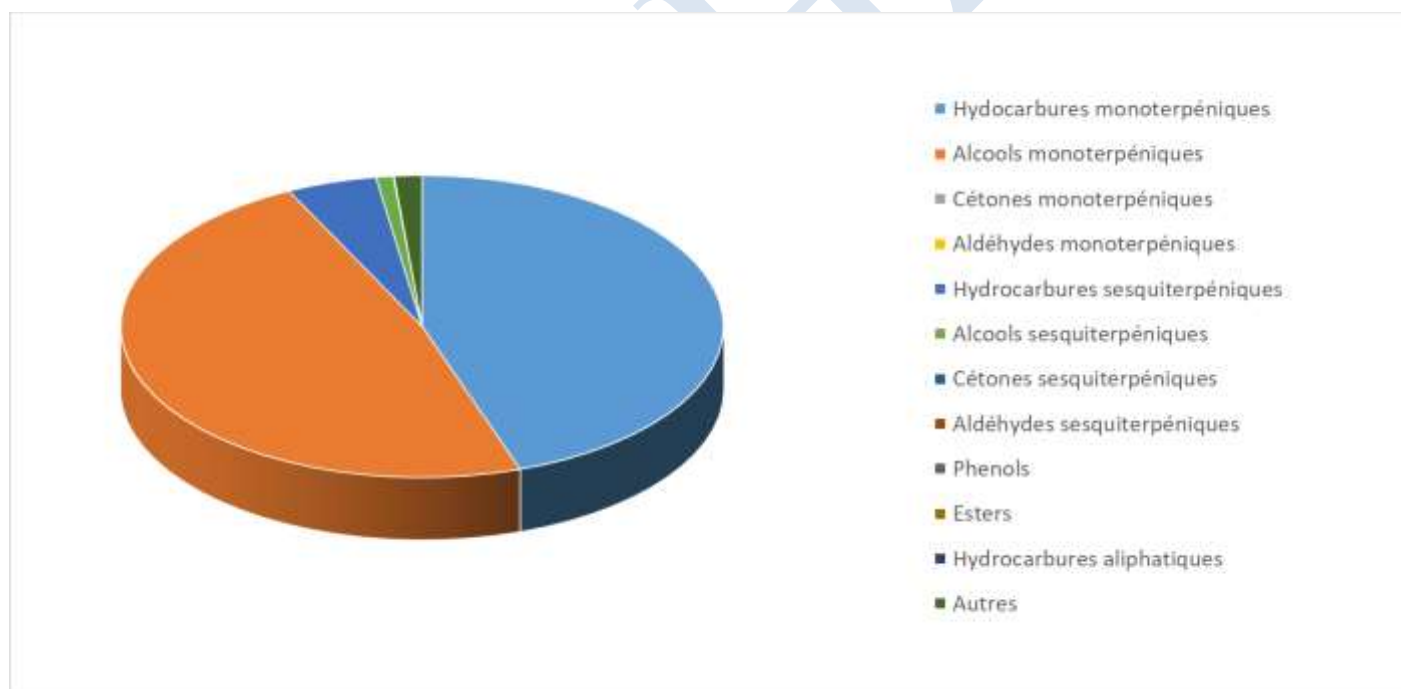


Date : 17/01/2025
 Référence produit / Product reference : FLE055
 Huile essentielle de / Essential oil of : Tea Tree
 Numéro de lot / Lot Number : BG170125ZA
 Densité à 20°C (g/cm³) / Density to 20°C (g/cm³) : 0.896
 Indice de réfraction / Refractive index : 1.477
 Pouvoir rotatoire à 20°C / Optical rotation to 20°C : 9.98 °
 Mode de culture / Culture mode : Sauvage / Wild
 Pays / Country : Afrique du Sud / South Africa
 Date de production / Production date : 09/2024
 D.L.U. / Shelf life : 10/2029
 Mode d'extraction / Extraction mode : Distillation à la vapeur / Steam distillation
 % Bio / % Organic : 100%
 Nom Latin / Latin Name : Melaleuca alternifolia
 Parties utilisées / Used Parts : Feuilles / Leaves



Molécule	%
ALPHA-THUJENE	0.618
ALPHA-PINENE	2.152
BETA-PINENE	0.588
CAMPHENE	0.019
SABINENE	0.127
BETA-MYRCENE	0.785
PARA-MENTHA-1(7)8-DIENE	0.015
ALPHA-PHELLANDRENE	0.332
BETA-PHELLANDRENE	0.619
1,4-CINEOLE	0.018
1,8-CINEOLE (EUCALYPTOL)	2.277
ALPHA-TERPINENE	9.389
GAMMA-TERPINENE	21.217
TERPINOLENE	3.434
TERPINENE-4-OL	44.304
ALPHA-TERPINEOL	3.008
PARA-CYMENE	2.209
PARA-CYMENENE	0.063
LIMONENE *	0.865
LINALOL *	0.045
TRANS-HYDRATE DE SABINENE	0.032
CIS-PARA-MENTH-2-EN-1-OL	0.242
TRANS-PARA-MENTH-2-EN-1-OL	0.168
BORNEOL	0.015
CIS-PIPERITOL	0.062
TRANS-PIPERITOL	0.080
CITRONELLOL	0.027
BICYCLOELEMENE	0.075
BETA-ELEMENE	0.020
ALPHA-CUBEBENE	0.025
ALPHA-COPAENE	0.099
ISOLEDENE	0.040
METHYL EUGENOL **	0.036
ALPHA-GURJUNENE	0.208
BETA-MAALIENE	0.025
ALPHA-MAALIENE	0.049

BETA-CARYOPHYLLENE*	0.257
ALPHA-CARYOPHYLLENE	0.064
AROMADENDRENE	0.812
ALLO-AROMADENDRENE	0.362
CIS-MUUROLA-3,5-DIENE	0.082
GAMMA-MUUROLENE	0.054
ALPHA-MUUROLOL	0.045
DELTA-SELINENE	0.092
TRANS-CADINA-1,(6)4-DIENE	0.199
DELTA-CADINENE	0.728
GAMMA-CADINENE	0.015
TRANS-CADINA-1,4-DIENE	0.136
VIRIDIFLORENE	0.749
BICYCLOGERMACRENE	0.524
CIS-CALAMENENE	0.093
ZONARENE	0.202
PALUSTROL	0.107
SPATHULENOL	0.083
VIRIDIFLOROL	0.293
1-EPI-CUBENOL	0.324
ROSIFOLIOL	0.095
10-EPI-GAMMA-EUDESOL	0.184
Total	98.787

* = Substance(s) allergène(s) / allergen(s)

** = Substance(s) classée(s) CMR / Substance(s) classified as CMR

