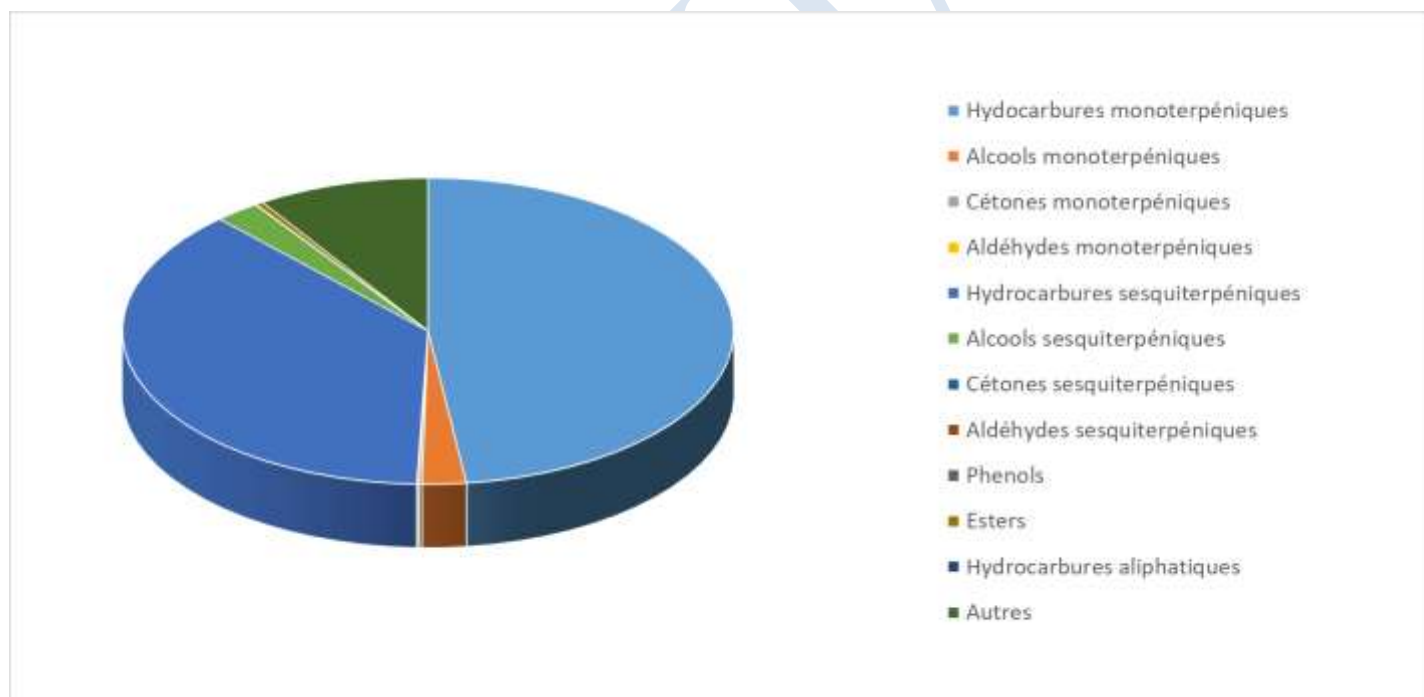


 <b>FLORIHANA</b> JE INTERNATIONAL	<b>ENREGISTREMENT DES BULLETINS          ANALYTIQUES : CHROMATOGRAPHIE          ESSENTIAL OIL CHROMATOGRAPHY          SHEET RECORDS</b>	7-2-ENR-005 v3	Page 1 sur 4
		Date d'application : 01/01/2013	
		Date de révision : 15/04/2022	

Date : 02/10/2025  
 Référence produit / Product reference : FLE038  
 Huile essentielle de / Essential oil of : Genevrier Rameaux / Juniper Branch  
 Numéro de lot / Lot Number : A160925F  
 Densité à 20°C (g/cm<sup>3</sup>) / Density to 20°C (g/cm<sup>3</sup>) : 0.8925  
 Indice de réfraction / Refractive index : 1.48508  
 Pouvoir rotatoire à 20°C / Optical rotation to 20°C : -15.30°  
 Mode de culture / Culture mode : Sauvage / Wild  
 Pays / Country : France  
 Date de production / Production date : 02/2025  
 D.L.U. / Shelf life : 03/2030  
 Mode d'extraction / Extraction mode : Distillation à la vapeur / Steam distillation  
 % Bio / % Organic : 100%  
 Nom Latin / Latin Name : Juniperus Communis  
 Parties utilisées / Used Parts : Branches / branch





Molécule	%
TRICYCLENE	0.090
ALPHA-THUJENE	0.990
<b>ALPHA-PINENE</b>	26.360
<b>BETA-PINENE</b>	2.720
THUJA-2,4(10)-DIENE	0.100
FENCHENE	0.110
CAMPHENE	0.310
SABINENE	9.180
BETA-MYRCENE	2.09
<b>ALPHA-TERPINENE</b>	0.04
<b>TERPINENOL</b>	0.93
GAMMA-TERPINENE	1.03
TERPINENE-4-OL	0.960
<b>ALPHA-TERPINEOL</b>	0.180
ALPHA-PHELLANDRENE	0.280
BETA-PHELLANDRENE	1.200
DELTA-3-CARENE	1.320
PARA-CYMENE	0.400
<b>LIMONENE *</b>	1.750
1,8-CINEOLE (EUCALYPTOL)	0.010
CIS-BETA-OCIMENE	0.020
TRANS-BETA-OCIMENE	0.080
CIS-HYDRATE DE SABINENE	0.050
TRANS-HYDRATE DE SABINENE	0.020
META-CYMENENE	0.060
<b>LINALOL *</b>	0.120
2-METHYLBUTANOATE DE 3-METHYLBUTYLE	0.030
BETA-THUJONE	0.010
ALPHA-THUJONE	0.030
ENDO-FENCHOL	0.010
ALPHA-CAMPHOLENAL	0.110
<b>CAMPHRE</b>	0.040
CIS-PINOCAMPHONE	0.030
PINOCARVONE	0.040
BORNEOL	0.050



VERBENONE	0.060
THYMOL METHYL ETHER	0.010
CARVACROL METHYL-ETHER	0.160
CARVACROL	0.040
<b>ACETATE DE LINALYLE*</b>	0.210
PELLANDRAL	0.010
ACETATE DE BORNYLE	0.160
ALPHA-CUBEBENE	0.720
ALPHA-LONGIPINENE	0.050
ALPHA-YLANGENE	0.020
ALPHA-COPAENE	0.280
BETA-COPAENE	0.080
ISO-LONGIFOLENE	0.240
LONGIFOLENE	1.450
ALPHA-CHAMIGRENE	1.250
BETA-CHAMIGRENE	0.470
<b>BETA-CARYOPHYLLENE*</b>	1.250
ALPHA-CARYOPHYLLENE	0.780
OXYDE DE CARYOPHYLLENE	0.200
BETA-CEDRENE	1.920
CIS-THUJOPSENE	20.440
TRANS-BETA-FARNESENE	0.130
BETA-ACORADIENE	0.060
TRANS-CADINA-1,(6)4-DIENE	0.300
GAMMA-CADINENE	0.230
DELTA-CADINENE	1.550
TRANS-CADINA-1,4-DIENE	0.060
GAMMA-MUUROLENE	0.300
TRANS-MUUROLA-4(14),5-DIENE	0.510
Ar-CURCUMENE	0.180
GERMACRENE D	0.970
GERMACRENE B	0.160
BETA-SELINENE	0.230
ALPHA-CUPRENENE	0.890
DELTA-CUPRENENE	0.180
CUPARENE	1.860
CIS-CALAMENENE	0.780



 <b>FLORIHANA</b> JE INTERNATIONAL	<b>ENREGISTREMENT DES BULLETINS          ANALYTIQUES : CHROMATOGRAPHIE          ESSENTIAL OIL CHROMATOGRAPHY          SHEET RECORDS</b>	7-2-ENR-005 v3	Page 4 sur 4
		Date d'application : 01/01/2013	
		Date de révision : 15/04/2022	

BETA-CALACORENE	0.110
SPATHULENOL	0.150
CEDROL	1.890
1-EPI-CUBENOL	0.150
THUJOPSENAL	0.150
<b>Total</b>	<b>91.390</b>

- \* = Substance(s) allergène(s) / allergen(s)  
 \*\* = Substance(s) classée(s) CMR / Substance(s) classified as CMR

FLORIHANA

