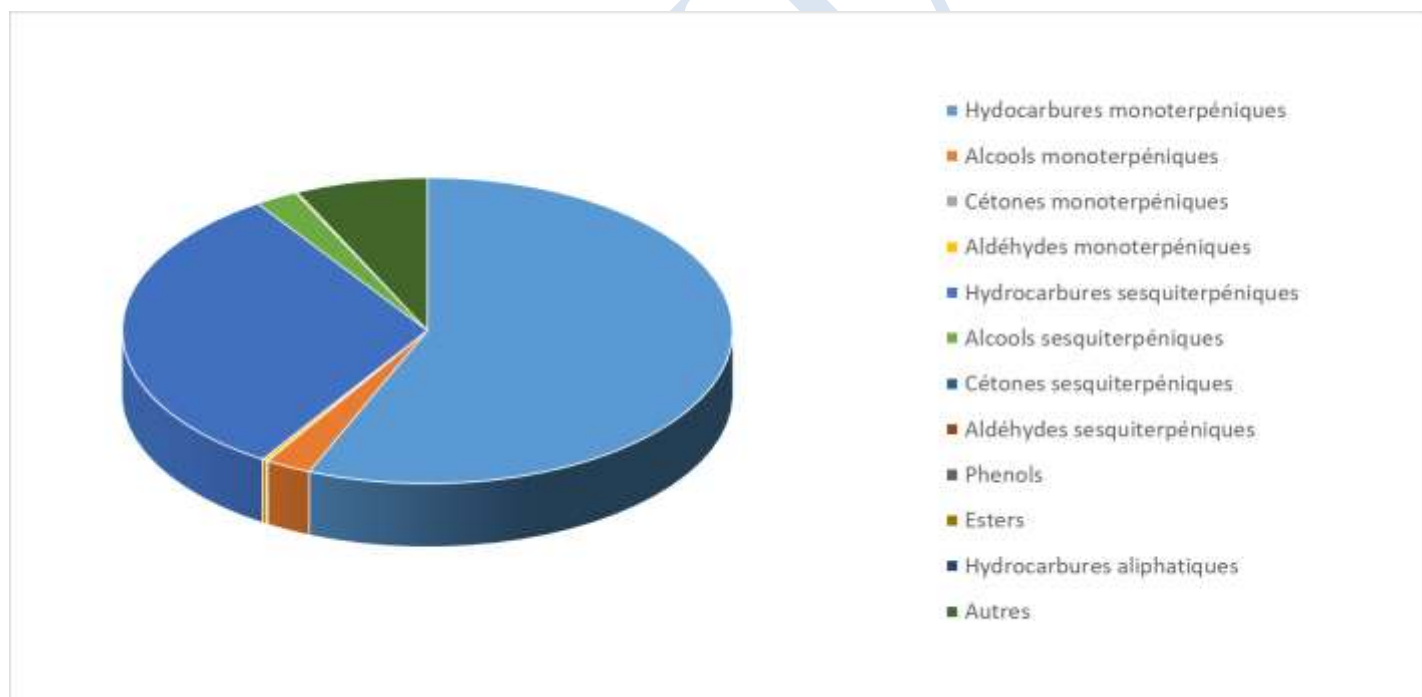


 FLORIHANA JE INTERNATIONAL	ENREGISTREMENT DES BULLETINS ANALYTIQUES : CHROMATOGRAPHIE ESSENTIAL OIL CHROMATOGRAPHY SHEET RECORDS	7-2-ENR-005 v3	Page 1 sur 4
		Date d'application : 01/01/2013	
		Date de révision : 15/04/2022	

Date : 02/05/2024
 Référence produit / Product reference : FLE038
 Huile essentielle de / Essential oil of : Genevrier Rameaux / Juniper Branch
 Numéro de lot / Lot Number : A020524F
 Densité à 20°C (g/cm³) / Density to 20°C (g/cm³) : 0.887
 Indice de réfraction / Refractive index : 1.48345
 Pouvoir rotatoire à 20°C / Optical rotation to 20°C : -12.82°
 Mode de culture / Culture mode : Sauvage / Wild
 Pays / Country : France
 Date de production / Production date : 02/2024
 D.L.U. / Shelf life : 03/2029
 Mode d'extraction / Extraction mode : Distillation à la vapeur / Steam distillation
 % Bio / % Organic : 100%
 Nom Latin / Latin Name : Juniperus Communis
 Parties utilisées / Used Parts : Branches / branch





Molécule	%
TRICYCLENE	0.080
ALPHA-THUJENE	1.31
ALPHA-PINENE	31.55
BETA-PINENE	2.12
FENCHENE	0.120
CAMPHENE	0.270
THUJA-2,4(10)-DIENE	0.140
VERBENENE	0.020
SABINENE	10.570
MYRCENE	2.250
DELTA-2-CARENE	0.050
DELTA-3-CARENE	1.27
ALPHA-PHELLANDRENE	0.32
BETA-PHELLANDRENE	1.37
ALPHA-TERPINENE	0.73
GAMMA-TERPINENE	1.3
TERPINENOL	0.99
TERPINENE-4-OL	1.15
ALPHA-TERPINEOL	0.09
PARA-CYMENE	0.68
LIMONENE *	1.95
TRANS-BETA-OCIMENE	0.03
CIS-HYDRATE DE SABINENE	0.05
PARA-CYMENENE	0.07
ALPHA-THUJONE	0.01
BETA-THUJONE	0.040
ALPHA-CAMPHOLENAL	0.150
CAMPHRE	0.020
TRANS-PINOCARVEOL	0.160
BICYCLOELEMENE	0.060
MYRTENAL	0.110
CARVACROL METHYL-ETHER	0.080
ACETATE DE BORNYLE	0.110
ACETATE DE MYRTENYLE	0.010
ALPHA-CUBEBENE	0.820
ALPHA-LONGIPINENE	0.030



ALPHA-COPAENE	0.280
BETA-BOURBONENE	0.190
BETA-ELEMENE	0.620
ISO-LONGIFOLENE	0.290
LONGIFOLENE	0.660
SIBIRENE	0.300
ALPHA-CHAMIGRENE	0.330
BETA-CARYOPHYLLENE*	1.070
ALPHA-CARYOPHYLLENE	0.670
OXYDE DE CARYOPHYLLENE	0.220
CIS-THUJOPSENE	15.400
CIS-MUUROLA-3,5-DIENE	0.040
GAMMA-MUUROLENE	0.240
TRANS-MUUROLA-4(14),5-DIENE	0.590
ALPHA-MUUROLENE	0.750
BETA-ACORADIENE	0.220
TRANS-CADINA-1,(6)4-DIENE	0.310
Ar-CURCUMENE	0.170
GERMACRENE D	0.740
GERMACRENE B	0.220
BETA-CHAMIGRENE	0.340
ALPHA-CHAMIGRENE	1.170
BETA-SELINENE	0.260
ALPHA-CUPRENENE	0.630
CUPARENE	1.950
GAMMA-CADINENE	0.190
DELTA-CADINENE	1.530
TRANS-CADINA-1,4-DIENE	0.070
CIS-CALAMENENE	0.840
GAMMA-SELINENE	0.200
BETA-CALACORENE	0.140
DELTA-CUPRENENE	0.170
TRANS-NEROLIDOL	0.110
SPATHULENOL	0.120
CEDROL	1.470
EPI-ALPHA-MUUROLOL	0.180
ALPHA-MUUROLOL	0.040



 FLORIHANA JE INTERNATIONAL	ENREGISTREMENT DES BULLETINS ANALYTIQUES : CHROMATOGRAPHIE ESSENTIAL OIL CHROMATOGRAPHY SHEET RECORDS	7-2-ENR-005 v3	Page 4 sur 4
		Date d'application : 01/01/2013	
		Date de révision : 15/04/2022	

ALPHA-CADINOL	0.120
ABIETADIENE	0.060
THUJOPSENAL	0.160
Total	93.140

- * = Substance(s) allergène(s) / allergen(s)
 ** = Substance(s) classée(s) CMR / Substance(s) classified as CMR

FLORIHANA

