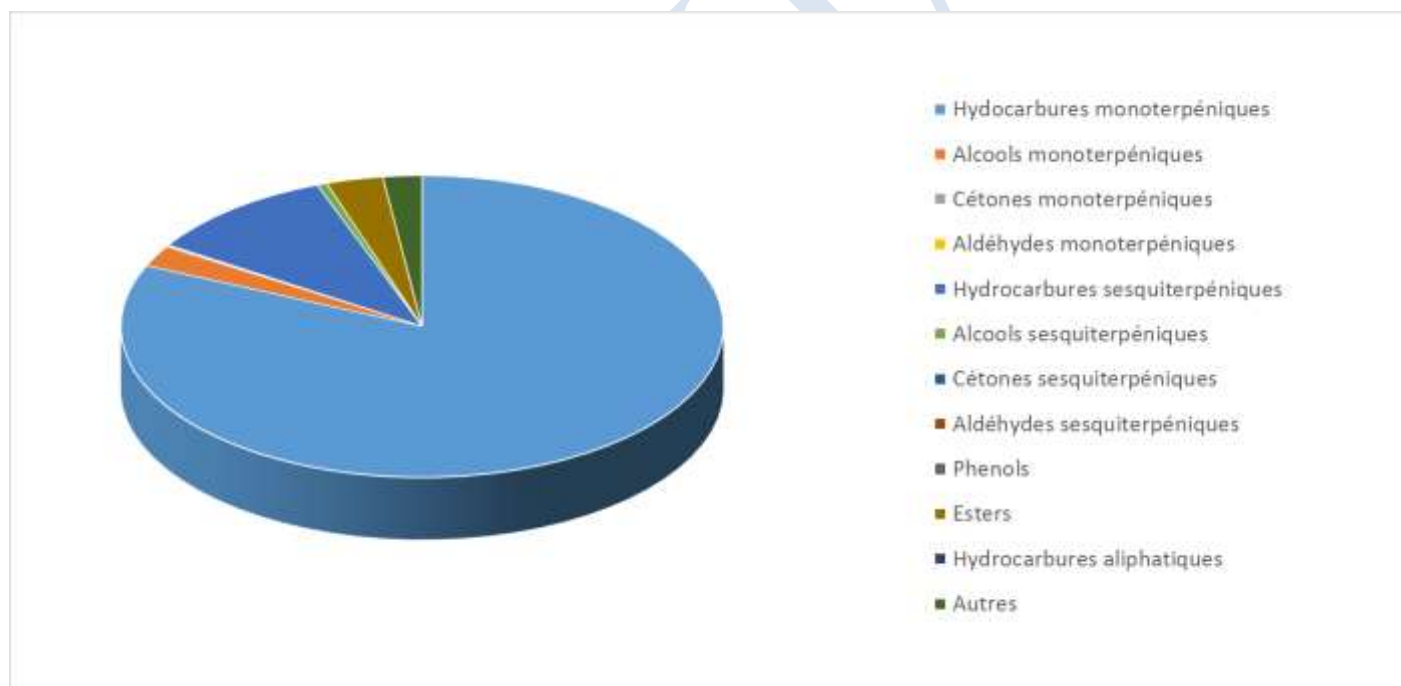


 <b>FLORIHANA</b> JE INTERNATIONAL	<b>ENREGISTREMENT DES BULLETINS          ANALYTIQUES : CHROMATOGRAPHIE          ESSENTIAL OIL CHROMATOGRAPHY          SHEET RECORDS</b>	7-2-ENR-005 v3	Page 1 sur 4
		Date d'application : 01/01/2013	
		Date de révision : 15/04/2022	

Date : 29/01/2024  
 Référence produit / Product reference : FLE030  
 Huile essentielle de / Essential oil of : Epicea / Common Spruce  
 Numéro de lot / Lot Number : AZ250124F  
 Densité à 20°C (g/cm<sup>3</sup>) / Density to 20°C (g/cm<sup>3</sup>) : 0.8729  
 Indice de réfraction / Refractive index : 1.47701  
 Pouvoir rotatoire à 20°C / Optical rotation to 20°C : -19.62°  
 Mode de culture / Culture mode : Sauvage / Wild  
 Pays / Country : France  
 Date de production / Production date : 12/2023  
 D.L.U. / Shelf life : 01/2029  
 Mode d'extraction / Extraction mode : Distillation à la vapeur / Steam distillation  
 % Bio / % Organic : 100%  
 Nom Latin / Latin Name : Picea abies  
 Parties utilisées / Used Parts : aiguilles/needles



<b>Molécule</b>	<b>%</b>
SANTENE	0.133
TRICYCLENE	0.287
ALPHA-THUJENE	0.071
<b>ALPHA-PINENE</b>	16.711
<b>BETA-PINENE</b>	30.740
FENCHENE	0.036
CAMPHENE	3.084
THUJA-2,4(10)-DIENE	0.031
3,7,7-TRIMETHYL-1,3,5-CYCLOHEPTATRIENE	0.030
SABINENE	0.367
MYRCENE	6.251
PARA-MENTHA-1(7)8-DIENE	0.042
ALPHA-PHELLANDRENE	0.118
BETA-PHELLANDRENE	5.372
DELTA-3-CARENE	6.238
<b>ALPHA-TERPINENE</b>	0.172
GAMMA-TERPINENE	0.31
<b>TERPINOLENE</b>	0.941
TERPINENE-4-OL	0.331
<b>ALPHA-TERPINEOL</b>	0.82
PARA-CYMENE	0.249
PARA-CYMENENE	0.081
META-CYMENENE	0.033
<b>LIMONENE *</b>	8.554
1,8-CINEOLE (EUCALYPTOL)	1.533
TRANS-BETA-OCIMENE	0.034
<b>LINALOL *</b>	0.095
ENDO-FENCHOL	0.056
ALLO-OCIMENE	0.020
ALPHA-CAMPHOLENAL	0.039
TRANS-PINOCARVEOL	0.130
<b>CAMPBRE</b>	0.496
HYDRATE DE CAMPHENE	0.344
TRANS-PINOCAMPHONE	0.049
PINOCARVONE	0.042
CIS-PINOCAMPHONE	0.047



ISO-BORNEOL	0.035
BORNEOL	0.824
<b>ESTRAGOLE**</b>	0.118
THYMOL METHYL ETHER	0.089
ACETATE DE BORNYLE	2.630
ACETATE D'ISOBORNYLE	0.022
ACETATE D'ALPHA-TERPINYLE	0.400
ALPHA-LONGIPINENE	0.334
LONGIFOLENE	1.541
ALPHA-YLANGENE	0.041
SIBIRENE	0.128
ALPHA-COPAENE	0.420
LONGICYCLENE	0.157
BETA-ELEMENE	0.095
GAMMA-ELEMENE	0.120
ALPHA-CEDRENE	0.063
<b>BETA-CARYOPHYLLENE*</b>	2.277
ALPHA-CARYOPHYLLENE	0.720
OXYDE DE CARYOPHYLLENE	0.131
ALPHA-TRANS-BERGAMOTENE	0.125
CIS-THUJOPSENE	0.262
TRANS-BETA-FARNESENE	0.249
TRANS-CADINA-1,(6)4-DIENE	0.480
GAMMA-CADINENE	0.365
DELTA-CADINENE	0.948
TRANS-CADINA-1,4-DIENE	0.038
ALPHA-CADINENE	0.118
EPI-ALPHA-CADINOL	0.092
GAMMA-MUUROLENE	0.157
ALPHA-MUUROLENE	0.285
EPI-ALPHA-MUUROLOL	0.099
ALPHA-MUUROLOL	0.024
Ar-CURCUMENE	0.050
GERMACRENE D	0.459
GERMACRENE B	0.119
TRANS-NEROLIDOL	0.052
SPATHULENOL	0.049



 <b>FLORIHANA</b> JE INTERNATIONAL	<b>ENREGISTREMENT DES BULLETINS          ANALYTIQUES : CHROMATOGRAPHIE          ESSENTIAL OIL CHROMATOGRAPHY          SHEET RECORDS</b>	7-2-ENR-005 v3	Page 4 sur 4
		Date d'application : 01/01/2013	
		Date de révision : 15/04/2022	

CEDROL	0.027
1-EPI-CUBENOL	0.044
CEMBRENE	0.415
META-CAMPHORENE	0.105
ABIETADIENE	0.065
<b>Total</b>	<b>98.659</b>

- \* = Substance(s) allergène(s) / allergen(s)  
 \*\* = Substance(s) classée(s) CMR / Substance(s) classified as CMR

FLORIHANA

