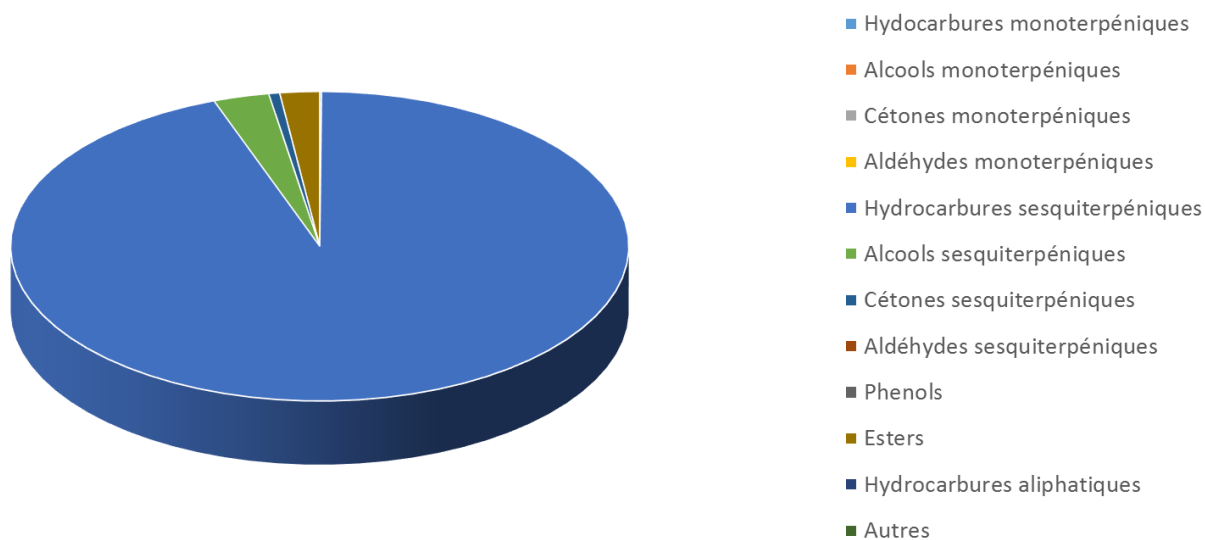



 <b>FLORIHANA</b>	<b>ENREGISTREMENT DES BULLETINS ANALYTIQUES : CHROMATOGRAPHIE ESSENTIAL OIL CHROMATOGRAPHY SHEET RECORDS</b>	<b>FORM-LAB005-B</b>	<b>Page 1 sur 4</b>
<b>JE INTERNATIONAL</b>		<b>Date d'entrée en vigueur / taking effect : 10/06/2011</b>	

Date	:	30/10/2019
Référence produit / Product reference	:	FLE264
Huile essentielle de / Essential oil of	:	Myrrhe / Myrrh
Numéro de lot / Lot Number	:	C301019SO
Densité à 20°C (g/cm <sup>3</sup> ) / Density to 20°C (g/cm <sup>3</sup> )	:	0.995
Indice de réfraction / Refractive index	:	1.52
Pouvoir rotatoire à 20°C / Optical rotation to 20°C	:	-73.5°
Mode de culture / Culture mode	:	Cultivé / Cultivated
Pays / Country	:	Somalie / Somalia
Date de production / Production date	:	10/2019
D.L.U. / Shelf life	:	11/2024
Mode d'extraction / Extraction mode	:	Distillation à la vapeur / Steam distillation
% Bio / % Organic	:	100%
Nom Latin / Latin Name	:	Commiphora myrrha
Parties utilisées / Used Parts	:	Résine / Resin



Molécule	%
ALPHA-PINENE	0.02
BETA-MYRCENE	0.01
<b>LIMONENE *</b>	0.02
(E)-BETA-OCIMENE	0.04
PARA-CYMENE	0.01
ALPHA-CUBEBENE	0.04
DELTA-ELEMENE	0.94
YLANGENE	0.03
ALPHA-YLANGENE	0.03
ALPHA-COPAENE	0.09
ALPHA-BOURBONENE	0.03
BETA-BOURBONENE	0.33
CYPERENE	0.01
ACETATE DE BORNYLE	0.06
CALARENE	0.12
BETA-ELEMENE	6.23
BETA-CUBEBENE	0.17
BETA-CARYOPHYLLENE	0.28
AROMADENDRENE	0.01
CADINA-3,4-DIENE	0.02
GERMACRENE A	2.12
GERMACRENE D	0.76
ALLO-AROMADENDRENE	0.03
ZONARENE	0.05
ALPHA-HUMULENE	0.2
4,5-DI-EPI-ARISTOLOCHENE	0.07
GAMMA-MUUROLENE	0.3
BETA-MAALIENE	0.04
DIMETHYL BENZOFURANE	0.02
BETA-SELINENE	0.93
ALPHA-SELINENE	1.11
DELTA-SELINENE	0.2
SELINA-3,7-DIENE	0.41
DELTA-CADINENE	0.41
GAMMA-CADINENE	0.19
CADINA-3,4-DIENE	0.03


 <b>FLORIHANA</b>	<b>ENREGISTREMENT DES BULLETINS ANALYTIQUES : CHROMATOGRAPHIE ESSENTIAL OIL CHROMATOGRAPHY SHEET RECORDS</b>	<b>FORM-LAB005-B</b>	<b>Page 3 sur 4</b>
<b>JE INTERNATIONAL</b>		<b>Date d'entrée en vigueur / taking effect : 10/06/2011</b>	

PANASINSENE ISOMERE	0.37
ALPHA-AMORPHENE	0.05
GERMACRENE B	2.45
CIS-CALAMENENE	0.03
TRANS-CALAMENENE	0.01
SESQUITERPENE	0.39
CURZERENE	39.68
ALPHA-CALACORENE	0.03
EPOXYDE SESQUITERPENIQUE	0.05
FURANOEUEDESMA-1,3-DIENE	0.49
1-EPI-CUBENOL	0.03
EPI-CUBENOL	0.03
ELEMOL	0.27
TRANS-BETA-ELEMENONE	0.27
FURANODIENE	0.3
FURANOEUEDESMA-1,3-DIENE	27.75
LINDESTRENE	2.58
10-EPI-GAMMA-EUEDESMOL	0.06
SESQUITERPENONE	0.07
GAMMA-EUEDESMOL	0.11
T-CADINOL	0.47
DITERPENE	0.31
FURANOEUEDESMADIENE ISOMERE	0.290
BETA-ELEMONE ISOMERE	0.47
ACETYL-8,12-EPOXYGERMACRA-1,4,7,11-	
TETRAENE	0.94
SELIN-11-EN-4-OL	0.19
SPATHULENOL	0.08
SESQUITERPENOL	1.42
ESTER CURZERENIQUE	1.96
CEMBRENOL	0.04
<b>Total</b>	<b>96.55</b>

\* = Substance(s) allergène(s) / allergen(s)

\*\* = Substance(s) classée(s) CMR / Substance(s) classified as CMR



 <b>FLORIHANA</b>	<b>ENREGISTREMENT DES BULLETINS ANALYTIQUES : CHROMATOGRAPHIE ESSENTIAL OIL CHROMATOGRAPHY SHEET RECORDS</b>	<b>FORM-LAB005-B</b>	<b>Page 4 sur 4</b>
<b>JE INTERNATIONAL</b>		<b>Date d'entrée en vigueur / taking effect : 10/06/2011</b>	

FLORIHANA

