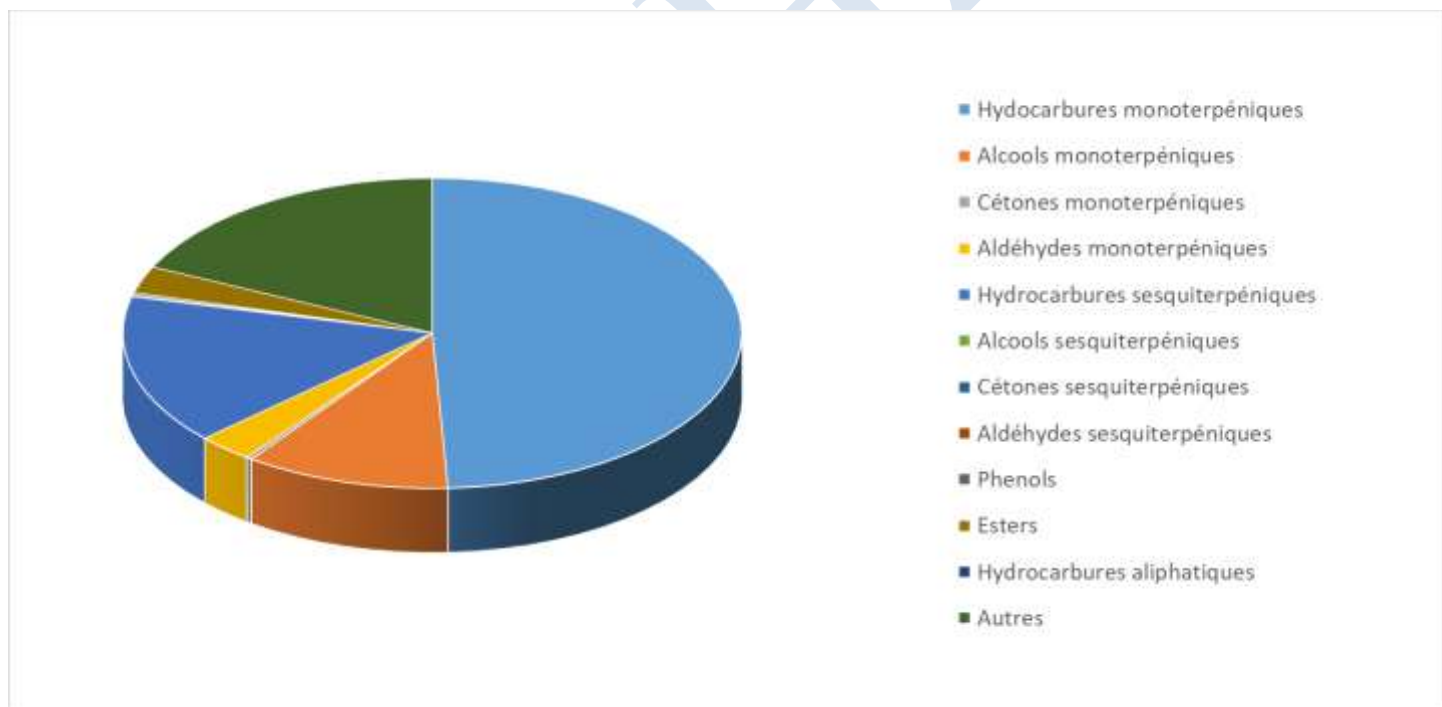


 <b>FLORIHANA</b> JE INTERNATIONAL	<b>ENREGISTREMENT DES BULLETINS          ANALYTIQUES : CHROMATOGRAPHIE          ESSENTIAL OIL CHROMATOGRAPHY          SHEET RECORDS</b>	7-2-ENR-005 v3	Page 1 sur 4
		Date d'application : 01/01/2013	
		Date de révision : 15/04/2022	

Date : 31/07/2024  
 Référence produit / Product reference : FLE157  
 Huile essentielle de / Essential oil of : Ledon du Groenland / Labrador Tea  
 Numéro de lot / Lot Number : A180724F  
 Densité à 20°C (g/cm<sup>3</sup>) / Density to 20°C (g/cm<sup>3</sup>) : 0.904  
 Indice de réfraction / Refractive index : 1.4847  
 Pouvoir rotatoire à 20°C / Optical rotation to 20°C : -13.85°  
 Mode de culture / Culture mode : Sauvage / Wild  
 Pays / Country : Canada  
 Date de production / Production date : 08/2023  
 D.L.U. / Shelf life : 09/2028  
 Mode d'extraction / Extraction mode : Distillation à la vapeur / Steam distillation  
 % Bio / % Organic : 100%  
 Nom Latin / Latin Name : Ledum Groenlandicum  
 Parties utilisées / Used Parts : Plante fleurie / Flowering plant





Molécule	%
TRICYCLENE	0.104
ALPHA-THUJENE	0.734
<b>ALPHA-PINENE</b>	4.831
<b>BETA-PINENE</b>	5.429
THUJA-2,4(10)-DIENE	0.063
FENCHENE	0.016
CAMPHENE	1.388
SABINENE	21.903
BETA-MYRCENE	0.181
1,3,8-P-MENTHATRIENE	0.020
ALPHA-PHELLANDRENE	0.232
BETA-PHELLANDRENE	0.818
DELTA-3-CARENE	0.01
<b>ALPHA-TERPINENE</b>	1.832
GAMMA-TERPINENE	5.536
<b>TERPINOLENE</b>	0.96
TERPINENE-4-OL	6.789
<b>ALPHA-TERPINEOL</b>	0.635
PARA-CYMENE	4.024
PARA-CYMENENE	0.102
<b>LIMONENE *</b>	0.99
CIS-BETA-OCIMENE	0.124
TRANS-BETA-OCIMENE	0.049
CIS-HYDRATE DE SABINENE	0.393
TRANS-HYDRATE DE SABINENE	0.349
<b>LINALOL *</b>	0.056
DEHYDRO-SABINA-CETONE	0.883
TRANS-PARA-MENTHA-2,8-DIEN-1-OL	0.037
CIS-PARA-MENTHA-2,8-DIENE-1-OL	0.037
TRANS-PARA-1(7)-MENTHA-8(9)-DIEN-2-OL	0.117
PARA-MENTHA-1,4-DIEN-7-OL	0.316
TRANS-PINOCARVEOL	1.866
TRANS-PINOCAMPHONE	0.123
<b>CAMPHRE</b>	0.015
SABINACETONE	0.622



PINOCARVONE	0.183
BORNEOL	0.219
PARA-CYMENE-8-OL	0.079
MYRTENAL	2.750
TRANS-ISOPIPERITENOL	0.038
CIS-ISOPIPERITENOL	0.036
CUMINALDEHYDE	1.236
PELLANDRAL	0.291
ACETATE DE BORNYLE	2.733
ALPHA-TERPINEN-7-AL	0.157
PARA-CYMEN-7-OL	0.265
CARVACROL	0.226
ACETATE D'ALPHA-TERPINYLE	0.030
PROPANOATE DE LAVANDULYLE	0.061
ALPHA-COPAENE	0.141
BETA-ELEMENE	0.183
ALPHA-GURJUNENE	0.503
<b>BETA-CARYOPHYLLENE*</b>	0.080
ALPHA-CARYOPHYLLENE	0.330
OXYDE DE CARYOPHYLLENE	0.187
ALPHA-TRANS-BERGAMOTENE	0.061
TRANS-BETA-FARNESENE	0.120
TRANS-MUUROLA-3,5-DIENE	0.056
ALLO-AROMADENDRENE	0.436
GERMACRENE D	0.079
BETA-SELINENE	8.943
ALPHA-SELINENE	1.566
TRANS-MUUROLA-4(14),5-DIENE	0.065
BETA-BISABOLENE	1.949
TRANS-ALPHA-BISABOLENE	0.136
DELTA-CADINENE	0.534
TRANS-CADINA-1,4-DIENE	0.059
CIS-CALAMENENE	0.112
ZONARENE	0.093
GERMACRENE B	0.028
ROSIFOLIOL	2.234
CYCLOCOLORENONE	1.483



 <b>FLORIHANA</b> JE INTERNATIONAL	<b>ENREGISTREMENT DES BULLETINS          ANALYTIQUES : CHROMATOGRAPHIE          ESSENTIAL OIL CHROMATOGRAPHY          SHEET RECORDS</b>	7-2-ENR-005 v3	Page 4 sur 4
		Date d'application : 01/01/2013	
		Date de révision : 15/04/2022	

**Total**

**89.266**

- \* = Substance(s) allergène(s) / allergen(s)
- \*\* = Substance(s) classée(s) CMR / Substance(s) classified as CMR

FLORIHANA

