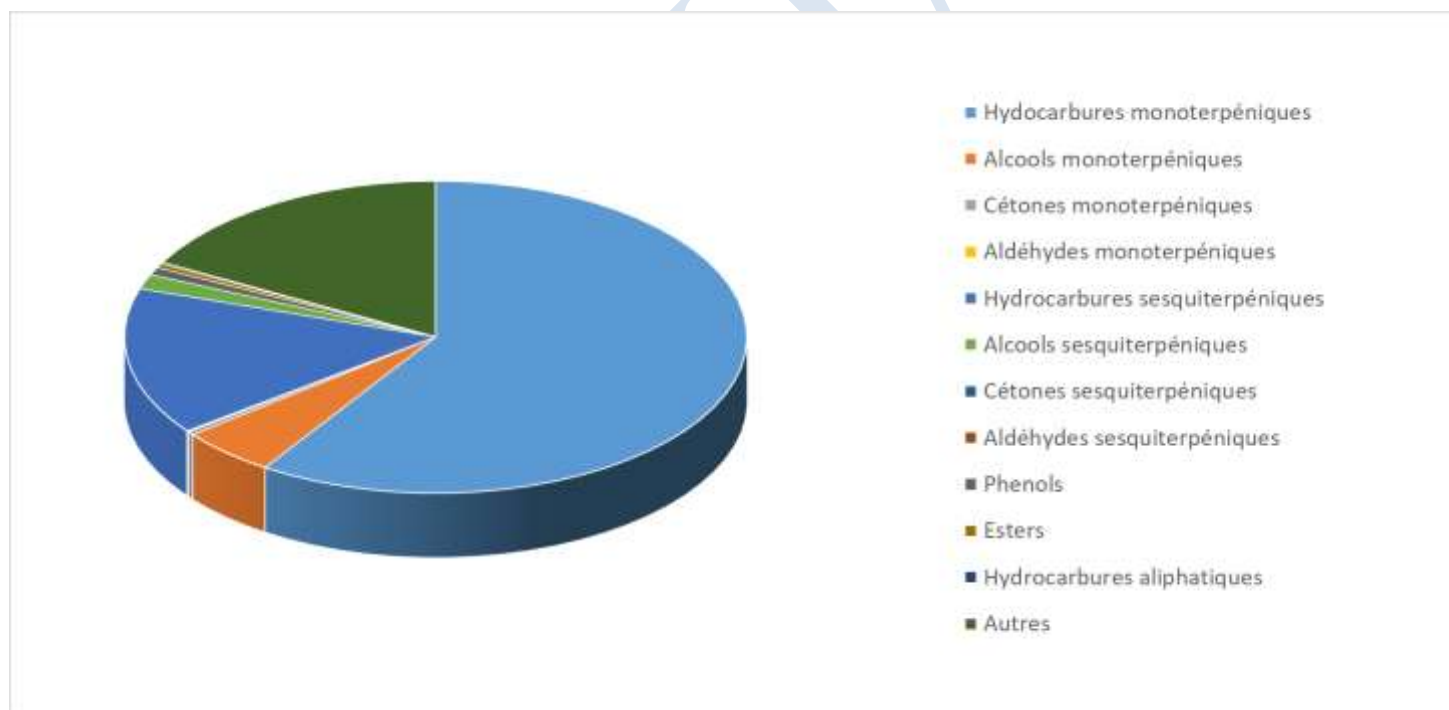


 FLORIHANA JE INTERNATIONAL	ENREGISTREMENT DES BULLETINS ANALYTIQUES : CHROMATOGRAPHIE ESSENTIAL OIL CHROMATOGRAPHY SHEET RECORDS	7-2-ENR-005 v3	Page 1 sur 4
		Date d'application : 01/01/2013	
		Date de révision : 15/04/2022	

Date : 24/10/2025
 Référence produit / Product reference : FLE125
 Huile essentielle de / Essential oil of : Camomille bleue / Blue chamomile
 Numéro de lot / Lot Number : AG241025MA
 Densité à 20°C (g/cm³) / Density to 20°C (g/cm³) : 0.908
 Indice de réfraction / Refractive index : ND
 Pouvoir rotatoire à 20°C / Optical rotation to 20°C : ND
 Mode de culture / Culture mode : Cultivé / Cultivated
 Pays / Country : Maroc / Morocco
 Date de production / Production date : 07/2025
 D.L.U. / Shelf life : 08/2030
 Mode d'extraction / Extraction mode : Distillation à la vapeur / Steam distillation
 % Bio / % Organic : 100%
 Nom Latin / Latin Name : Tanacetum annuum
 Parties utilisées / Used Parts : Sommités fleuries / Flowering tops





Molécule	%
TRICYCLEN	0.050
ALPHA-PINENE	2.740
BETA-PINENE	6.540
ALPHA-THUJENE	0.280
2-METHYLBUTYRATE D'ETHYLE	0.060
2-METHYL-BUTYRATE DE PROPYLE	0.070
2-METHYLBUTYRATE D'ISOAMYLE	0.090
2-METHYLBUTYRATE D'HEXYLE	0.020
CAMPHENE	0.83
SABINENE	18.97
DELTA-3-CARENE	0.02
BETA-MYRCENE	6.41
ALPHA-PHELLANDRENE	6.080
BETA-PHELLANDRENE	0.640
ALPHA-TERPINENE	0.610
GAMMA-TERPINENE	1.070
TERPINOLENE	0.440
TERPINENE-4-OL	1.720
ALPHA-TERPINEOL	0.170
ISOBUTYRATE DE 2-METHYLBUTYLE	0.020
LIMONENE *	2.210
DIMETHYLACRYLATE D'ETHYLE	0.030
TRANS-BETA-OCIMENE	0.020
PARA-CYMENE	4.630
OCTANAL	0.030
4,8-DIMETHYL-1,3,7-NONATRIENE	0.030
6-METHYL-5-HEPTENE-2-ONE	0.050
VALERATE DE PRENYLE	0.040
PERILLENE	0.020
CIS-OXYDE DE LINALOL	0.040
LINALOL *	0.180
TRANS-THUJANOL	0.110
ALPHA-COPAENE	0.090
DECANAL	0.020
SESQUITERPENE	0.300
CAMPBRE	7.730



CIS-PARA-MENTH-3-EN-7-AL	0.050
TRANS-PARA-MENTH-2-EN-1-OL	0.080
CIS-PARA-MENTH-2-EN-1-OL	0.060
PARA-MENTHA-1,3-EN-7-AL	0.070
CIS-THUJANOL	0.070
1-METHYL-4-ACETYCYCLOHEX-1-ENE	0.440
1-OCTANOL	0.110
FORMATE DE BORNYLE	0.020
EPSILON-CADINENE	0.020
DELTA-CADINENE	0.120
ACETATE DE BORNYLE	0.020
ALPHA-TRANS-BERGAMOTENE	0.030
BETA-ELEMENE	0.330
BETA-CARYOPHYLLENE*	1.800
ALPHA-CARYOPHYLLENE	0.270
OXYDE DE CARYOPHYLLENE	0.430
BENZOATE DE METHYLE	0.030
MYRTENAL	0.070
SABINACETONE	0.030
TRANS-PINOCARVEOL	0.050
PULEGONE	0.200
CARVOTANACETONE	0.100
TRANS-CARVEOL	0.020
CARVACROL	0.060
4,5-DI-EPI-ARISTOLOCHENE	0.080
GAMMA-MUUROLENE	0.060
GAMMA-CURCUMENE	0.060
BORNEOL	2.320
GERMACRENE D	1.620
BICYCLOGERMACRENE	0.230
BETA-SELINENE	0.380
PIPERITONE	0.060
TRANS-PIPERITOL	0.110
ALPHA-MUUROLENE	0.130
BETA-BISABOLENE	0.070
CIS-ISOPIPERITENOL	0.030
BETA-SESQUIPELLANDRENE	0.630



ALPHA-CURCUMENE	0.060
CUMINAL	0.090
PERILLALDEHYDE	0.020
TRANS-SABINOL	0.100
CIS-BETA-DAMASCENONE	0.030
PARA-CYMENE-8-OL	0.040
VALERATE DE 2-PHENYLETHYLE	0.030
ISOVALERATE DE 2-PHENYLETHYLE	0.060
DIHYDROCHAMAZULENE	3.780
5,6-DEHYDRO-CHAMAZULENE	4.000
CHAMAZULENE	8.980
EPOXY-6,7-HUMULENE	0.060
JUNENOL	0.040
ELEMOL	0.080
PARA-ANISATE DE METHYLE	0.090
CUMINOL	0.050
SPATHULENOL	0.160
TRIMETHYL PENTADECANONE	0.180
GAMMA-EUDESOL	0.020
BETA-EUDESOL	0.770
AGAROSPIROL	0.190
THYMOL	0.750
SESQUITERPENOL	0.060
Total	92.260

* = Substance(s) allergène(s) / allergen(s)

** = Substance(s) classée(s) CMR / Substance(s) classified as CMR

