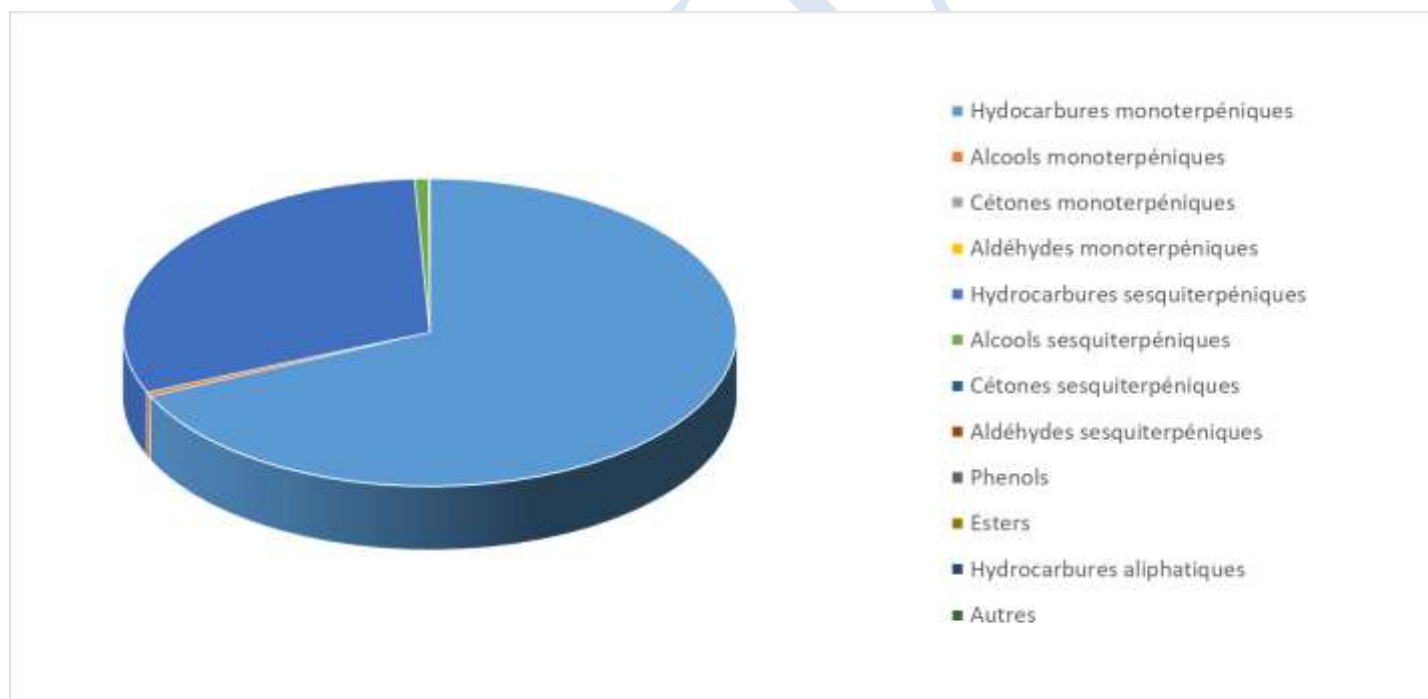


 FLORIHANA JE INTERNATIONAL	ENREGISTREMENT DES BULLETINS ANALYTIQUES : CHROMATOGRAPHIE ESSENTIAL OIL CHROMATOGRAPHY SHEET RECORDS	7-2-ENR-005 v3	Page 1 sur 3
		Date d'application : 01/01/2013	
		Date de révision : 15/04/2022	

Date : 25/06/2024
 Référence produit / Product reference : FLE122
 Huile essentielle de / Essential oil of : Poivre noir / Black pepper
 Numéro de lot / Lot Number : R130624MG
 Densité à 20°C (g/cm³) / Density to 20°C (g/cm³) : 0.863
 Indice de réfraction / Refractive index : 1.48
 Pouvoir rotatoire à 20°C / Optical rotation to 20°C : 2.24°
 Mode de culture / Culture mode : Cultivé / Cultivated
 Pays / Country : Madagascar
 Date de production / Production date : 04/2024
 D.L.U. / Shelf life : 05/2029
 Mode d'extraction / Extraction mode : Distillation à la vapeur / Steam distillation
 % Bio / % Organic : 100%
 Nom Latin / Latin Name : Piper nigrum L.
 Parties utilisées / Used Parts : Baies / Berry





Molécule	%
ALPHA-THUJENE	0.063
ALPHA-PINENE	13.371
BETA-PINENE	12.913
ALPHA-FENCHENE	0.012
CAMPHENE	0.427
CAMPHRE	0.030
SABINENE	0.242
BETA-MYRCENE	2.360
PARA-MENTHA-1(7)8-DIENE	0.024
ALPHA-PHELLANDRENE	3.068
DELTA-3-CARENE	13.527
ALPHA-TERPINENE	0.039
GAMMA-TERPINENE	0.106
TERPINOLENE	0.627
TERPINENE-4-OL	0.018
ALPHA-TERPINEOL	0.174
META-CYMENE	0.027
PARA-CYMENE	0.475
LIMONENE *	20.105
BETA-PHELLANDRENE	0.166
1,8-CINEOLE (EUCALYPTOL)	0.062
CIS-BETA-OCIMENE	0.026
TRANS-BETA-OCIMENE	0.25
PARA-MENTHA-2,4(8)-DIENE	0.213
LINALOL *	0.255
BICYCLOELEMENE	0.130
DELTA-ELEMENE	2.791
BETA-ELEMENE	1.251
GAMMA-ELEMENE	0.073
ALPHA-CUBEBENE	0.070
BETA-CUBEBENE	0.046
CYCLOSATIVENE	0.360
ALPHA-COPAENE	0.148
BETA-COPAENE	0.026
ALPHA-GURJUNENE	0.098
BETA-CARYOPHYLLENE*	17.565



ALPHA-CARYOPHYLLENE	1.285
OXYDE DE CARYOPHYLLENE	0.426
ALPHA-GUAIENE	0.362
TRANS-CADINA-1,(6)4-DIENE	0.054
GAMMA-CADINENE	0.035
DELTA-CADINENE	0.115
GAMMA-GURJUNENE	0.033
ALPHA-AMORPHENE	0.030
GERMACRENE D	2.524
GERMACRENE B	0.118
SELINADIENE	0.038
DELTA-SELINENE	0.038
BETA-SELINENE	1.782
ALPHA-SELINENE	1.219
7-EPI-ALPHA-SELINENE	0.050
TRANS-MUUROLA-4(14),5-DIENE	0.023
ALPHA-MUUROLENE	0.071
ALPHA-BULNESENE	0.046
TRANS-TRANS-ALPHA-FARNESENE	0.166
BETA-BISABOLENE	0.061
ISOSPATHULENOL	0.305
ALLO-AROMADENDRENE	0.033
Total	99.952

* = Substance(s) allergène(s) / allergen(s)

** = Substance(s) classée(s) CMR / Substance(s) classified as CMR

