
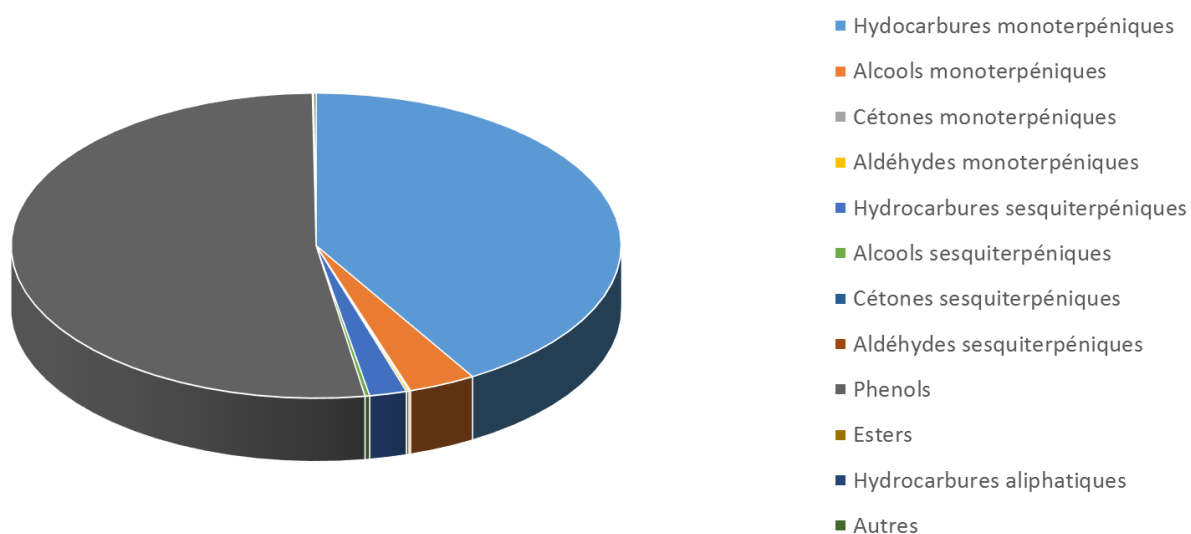



|   |  |  |                     |
|---|--|--|---------------------|
|  <b>FLORIHANA</b> | <b>ENREGISTREMENT DES BULLETINS<br/>ANALYTIQUES : CHROMATOGRAPHIE<br/>ESSENTIAL OIL CHROMATOGRAPHY SHEET<br/>RECORDS</b> | <b>FORM-LAB005-B</b>   | <b>Page 1 sur 3</b> |
| <b>JE INTERNATIONAL</b>   |  | <b>Date d'entrée en vigueur / taking<br/>effect : 10/06/2011</b> |                     |


Date : 18/03/2020  
 Référence produit / Product reference : FLE091  
 Huile essentielle de / Essential oil of : Thym Thymol / Thyme Thymol  
 Numéro de lot / Lot Number : L180320ES  
 Densité à 20°C (g/cm<sup>3</sup>) / Density to 20°C (g/cm<sup>3</sup>) : 0.915  
 Indice de réfraction / Refractive index : 1.497  
 Pouvoir rotatoire à 20°C / Optical rotation to 20°C : -0.62°  
 Mode de culture / Culture mode : Sauvage / Wild  
 Pays / Country : Espagne / Spain  
 Date de production / Production date : 11/2019  
 D.L.U. / Shelf life : 12/2024  
 Mode d'extraction / Extraction mode : Distillation à la vapeur / Steam distillation  
 % Bio / % Organic : 100%  
 Nom Latin / Latin Name : Thymus vulgaris thymoliferum  
 Parties utilisées / Used Parts : Sommités Fleuries / Flowering Tops



|   |  |  |                     |
|---|--|--|---------------------|
|  <b>FLORIHANA</b> | <b>ENREGISTREMENT DES BULLETINS<br/>ANALYTIQUES : CHROMATOGRAPHIE<br/>ESSENTIAL OIL CHROMATOGRAPHY SHEET<br/>RECORDS</b> | <b>FORM-LAB005-B</b>   | <b>Page 2 sur 3</b> |
| <b>JE INTERNATIONAL</b>   |  | <b>Date d'entrée en vigueur / taking<br/>effect : 10/06/2011</b> |                     |

| Molécule                   | %     |
|----------------------------|-------|
| ALPHA-PINENE               | 1.12  |
| ALPHA-THUJENE              | 1.68  |
| CAMPHENE                   | 0.64  |
| BETA-PINENE                | 0.21  |
| DELTA-3-CARENE             | 0.11  |
| MYRCENE                    | 2.28  |
| ALPHA-PHELLANDRENE         | 0.22  |
| ALPHA-TERPINENE            | 1.86  |
| <b>LIMONENE *</b>          | 0.48  |
| 1,8-CINEOLE (EUCALYPTOL)   | 0.2   |
| BETA-PHELLANDRENE          | 0.32  |
| GAMMA-TERPINENE            | 11.7  |
| TRANS-BETA-OCIMENE         | 0.08  |
| 3-OCTANONE                 | 0.07  |
| PARA-CYMENE                | 17.32 |
| ALPHA-TERPINEOL            | 0.13  |
| CIS-OXYDE DE LINALOL       | 0.07  |
| TRANS-OXYDE DE LINALOL     | 0.08  |
| ALPHA,PARA-DIMETHYLSTYRENE | 0.12  |
| TRANS-HYDRATE DE SABINENE  | 0.26  |
| CAMPBRE                    | 0.22  |
| <b>LINALOL *</b>           | 4.46  |
| FORMATE D'ISOBORNYLE       | 0.06  |
| TERPINENE-4-OL             | 1.31  |
| BETA-CARYOPHYLLENE         | 1.73  |
| CIS-DIHYDROCARVONE         | 0.08  |
| ALPHA-TERPINEOL            | 0.2   |
| <b>NERAL *</b>             | 0.04  |
| BORNEOL                    | 1.18  |
| <b>GERANIAL *</b>          | 0.09  |
| DELTA-CADINENE             | 0.1   |
| PARA-CYMENE-8-OL           | 0.07  |
| OXYDE DE CARYOPHYLLENE     | 0.16  |
| SPATHULENOL                | 0.07  |
| THYMOL ISOMERE             | 0.11  |
| THYMOL                     | 45.85 |



|   |  |  |                     |
|---|--|--|---------------------|
|  <b>FLORIHANA</b> | <b>ENREGISTREMENT DES BULLETINS<br/>ANALYTIQUES : CHROMATOGRAPHIE<br/>ESSENTIAL OIL CHROMATOGRAPHY SHEET<br/>RECORDS</b> | <b>FORM-LAB005-B</b>   | <b>Page 3 sur 3</b> |
| <b>JE INTERNATIONAL</b>   |  | <b>Date d'entrée en vigueur / taking<br/>effect : 10/06/2011</b> |                     |

CARVACROL

2.62

**Total**

**97.3**

\* = Substance(s) allergène(s) / allergen(s)

\*\* = Substance(s) classée(s) CMR / Substance(s) classified as CMR

