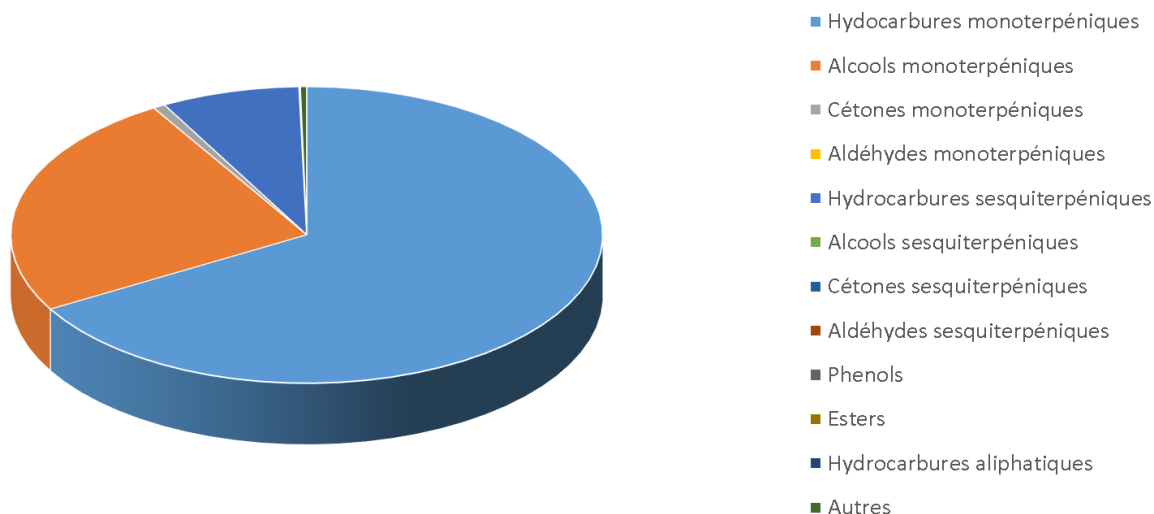

 <b>FLORIHANA</b>	<b>ENREGISTREMENT DES BULLETINS ANALYTIQUES : CHROMATOGRAPHIE ESSENTIAL OIL CHROMATOGRAPHY SHEET RECORDS</b>	<b>FORM-LAB005-B</b>	<b>Page 1 sur 3</b>
<b>JE INTERNATIONAL</b>		<b>Date d'entrée en vigueur / taking effect : 10/06/2011</b>	


Date	:	09/07/2019
Référence produit / Product reference	:	FLE073
Huile essentielle de / Essential oil of	:	Ravintsara
Numéro de lot / Lot Number	:	R090719MG
Densité à 20°C (g/cm³) / Density to 20°C (g/cm³)	:	0.906
Indice de réfraction / Refractive index	:	1.4656
Pouvoir rotatoire à 20°C / Optical rotation to 20°C	:	-20.1°
Mode de culture / Culture mode	:	Sauvage / Wild
Pays / Country	:	Madagascar
Date de production / Production date	:	04/2019
D.L.U. / Shelf life	:	05/2024
Mode d'extraction / Extraction mode	:	Distillation à la vapeur / Steam distillation
% Bio / % Organic	:	100%
Nom Latin / Latin Name	:	Cinnamomum camphora
Parties utilisées / Used Parts	:	Feuilles / Leaves



 <b>FLORIHANA</b>	<b>ENREGISTREMENT DES BULLETINS ANALYTIQUES : CHROMATOGRAPHIE ESSENTIAL OIL CHROMATOGRAPHY SHEET RECORDS</b>	<b>FORM-LAB005-B</b>	<b>Page 2 sur 3</b>
<b>JE INTERNATIONAL</b>		<b>Date d'entrée en vigueur / taking effect : 10/06/2011</b>	

<b>Molécule</b>	<b>%</b>
ISOVALERALDEHYDE	0.01
ETHANOL	0.07
ALPHA-PINENE	5.11
ALPHA-THUJENE	0.88
ALPHA-FENCHENE	0.02
CAMPHENE	0.18
BETA-PINENE	3.62
SABINENE	14.31
BETA-MYRCENE	1.66
ALPHA-PHELLANDRENE	0.09
ALPHA-TERPINENE	0.92
GAMMA-TERPINENE	1.49
2,3-DEHYDRO-1,8-CINEOLE	0.02
1,8-CINEOLE (EUCALYPTOL)	55.56
<b>LIMONENE *</b>	0.82
ALCOOL ISOAMYLIQUE	0.03
(Z)-BETA-OCIMENE	0.06
(E)-BETA-OCIMENE	0.3
PARA-CYMENE	0.27
TERPINOLENE	0.4
3-HEXEN-1-OL	0.02
ALPHA-CUBEBENE	0.01
TRANS-THUJONE	0.3
DELTA-ELEMENE	0.02
BETA-ELEMENE	0.12
YLANGENE	0.02
ALPHA-COPAENE	0.02
BETA-BOURBONENE	0.01
CIS-THUJANOL	0.17
<b>LINALOL *</b>	0.04
TRANS-PARA-MENTH-2-EN-1-OL	0.11
ACETATE DE BORNYLE	0.01
BETA-CARYOPHYLLENE	0.59
TERPINENE-4-OL	2.36
AROMADENDRENE	0.04
CIS-PARA-MENTH-2-EN-1-OL	0.07



 <b>FLORIHANA</b>	<b>ENREGISTREMENT DES BULLETINS ANALYTIQUES : CHROMATOGRAPHIE ESSENTIAL OIL CHROMATOGRAPHY SHEET RECORDS</b>	<b>FORM-LAB005-B</b>	<b>Page 3 sur 3</b>
<b>JE INTERNATIONAL</b>		<b>Date d'entrée en vigueur / taking effect : 10/06/2011</b>	

GERMACRENE A	0.02
GERMACRENE D	0.27
BICYCLOGERMACRENE	0.36
SESQUITERPENE	0.01
ALPHA-HUMULENE	0.79
DELTA-TERPINEOL	0.63
ALPHA-TERPINEOL	7.53
CIS-PIPERITOL	0.02
LEDENE	0.01
BORNEOL	0.08
BETA-SELINENE	0.14
ALPHA-SELINENE	0.11
TRANS-PIPERITOL	0.04
DELTA-CADINENE	0.03
GAMMA-CADINENE	0.01
NEROL	0.1
GERMACRENE B	0.05
EPOXY-CARYOPHYLLENE	0.01
EPOXY-6,7-HUMULENE	0.01
GUAIOL	0.01
SPATHULENOL	0.01
<b>Total</b>	<b>99.97</b>

\* = Substance(s) allergène(s) / allergen(s)

\*\* = Substance(s) classée(s) CMR / Substance(s) classified as CMR

