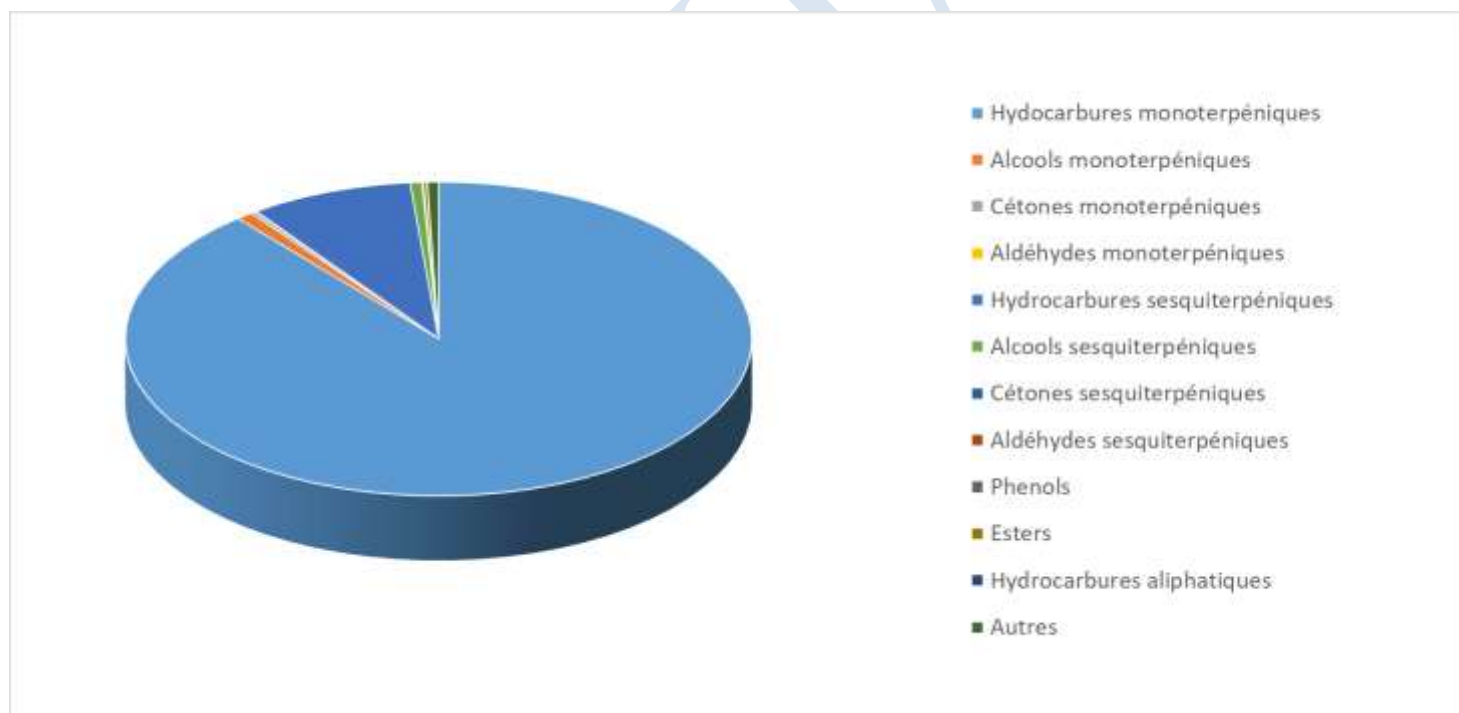


 <b>FLORIHANA</b> JE INTERNATIONAL	<b>ENREGISTREMENT DES BULLETINS          ANALYTIQUES : CHROMATOGRAPHIE          ESSENTIAL OIL CHROMATOGRAPHY          SHEET RECORDS</b>	7-2-ENR-005 v3	Page 1 sur 4
		Date d'application : 01/01/2013	
		Date de révision : 15/04/2022	

Date : 31/03/2025  
 Référence produit / Product reference : FLE071  
 Huile essentielle de / Essential oil of : Pin Sylvestre / Scots Pine  
 Numéro de lot / Lot Number : A170325F  
 Densité à 20°C (g/cm<sup>3</sup>) / Density to 20°C (g/cm<sup>3</sup>) : 0.8652  
 Indice de réfraction / Refractive index : 1.47315  
 Pouvoir rotatoire à 20°C / Optical rotation to 20°C : -11.65°  
 Mode de culture / Culture mode : Sauvage / Wild  
 Pays / Country : France  
 Date de production / Production date : 02/2025  
 D.L.U. / Shelf life : 03/2030  
 Mode d'extraction / Extraction mode : Distillation à la vapeur / Steam distillation  
 % Bio / % Organic : 100%  
 Nom Latin / Latin Name : Pinus Sylvestris  
 Parties utilisées / Used Parts : Aiguilles / Needles





Molécule	%
TRICYCLEN	0.468
ALPHA-THUJENE	0.069
<b>ALPHA-PINENE</b>	51.941
<b>BETA-PINENE</b>	22.186
FENCHENE	0.033
CAMPHE	2.402
THUJA-2,4(10)-DIENE	0.047
SABINENE	0.183
BETA-MYRCENE	5.051
ALPHA-PHELLANDRENE	0.039
BETA-PHELLANDRENE	0.952
DELTA-3-CARENE	1.258
<b>ALPHA-TERPINENE</b>	0.043
GAMMA-TERPINENE	0.077
<b>TERPINOLENE</b>	0.446
TERPINENE-4-OL	0.096
<b>ALPHA-TERPINEOL</b>	0.463
ACETATE D'ALPHA-TERPINYLE	0.038
PARA-CYMENE	0.071
TRANS-BETA-OCIMENE	0.564
CIS-BETA-OCIMENE	0.063
<b>LIMONENE *</b>	3.470
CIS-OXYDE DE LIMONENE	0.015
FENCHONE	0.054
NONANAL	0.027
TRANS-THUJONE	0.047
ALPHA-CAMPHOLENAL	0.049
HYDRATE DE CAMPHE	0.023
TRANS-PINOCAMPHONE	0.067
CIS-PINOCAMPHONE	0.044
TRANS-PINOCARVEOL	0.126
PINOCARVONE	0.030
NOPINONE	0.031
<b>CAMPHE</b>	0.054
PARA-MENTHA-1,5-DIEN-8-OL	0.022
BORNEOL	0.061



PARA-CYMENE-8-OL	0.011
MYRTENOL	0.095
VERBENONE	0.022
THYMOL METHYL ETHER	0.009
ACETATE DE BORNYLE	0.150
BICYCLOELEMENE	0.073
ALPHA-CUBEBENE	0.049
ALPHA-LONGIPINENE	0.020
ALPHA-YLANGENE	0.025
BETA-YLANGENE	0.078
ALPHA-COPAENE	0.109
BETA-COPAENE	0.087
BETA-BOURBONENE	0.036
<b>METHYL EUGENOL **</b>	0.060
LONGIFOLENE	0.122
<b>BETA-CARYOPHYLLENE*</b>	1.693
ALPHA-CARYOPHYLLENE	0.280
OXYDE DE CARYOPHYLLENE	0.086
CIS-THUJOPSENE	0.103
AROMADENDRENE	0.179
TRANS-BETA-FARNESENE	0.028
CIS-MUUROLA-3,5-DIENE	0.036
TRANS-MUUROLA-4(14),5-DIENE	0.106
GAMMA-MUUROLENE	0.308
ALPHA-MUUROLENE	0.717
EPI-ALPHA-MUUROLOL	0.089
ALPHA-MUUROLOL	0.022
TRANS-CADINA-1,(6)4-DIENE	0.043
GAMMA-CADINENE	0.611
DELTA-CADINENE	1.373
TRANS-CADINA-1,4-DIENE	0.035
ALPHA-CADINENE	0.059
EPI-ALPHA-CADINOL	0.119
ALPHA-AMORPHENE	0.013
DELTA-AMORPHENE	0.046
GERMACRENE D	1.441
BETA-SELINENE	0.200



 <b>FLORIHANA</b> JE INTERNATIONAL	<b>ENREGISTREMENT DES BULLETINS          ANALYTIQUES : CHROMATOGRAPHIE          ESSENTIAL OIL CHROMATOGRAPHY          SHEET RECORDS</b>	7-2-ENR-005 v3	Page 4 sur 4
		Date d'application : 01/01/2013	
		Date de révision : 15/04/2022	

BETA-BISABOLENE	0.012
CIS-CALAMENENE	0.016
BETA-CALACORENE	0.008
ZONARENE	0.019
SPATHULENOL	0.183
CEDROL	0.031
EPI-ALPHA-CADINOL	0.079
META-CAMPHORENE	0.009
SANDARACOPIMARADIENE	0.025
<b>Total</b>	<b>99.525</b>

\* = Substance(s) allergène(s) / allergen(s)

\*\* = Substance(s) classée(s) CMR / Substance(s) classified as CMR

