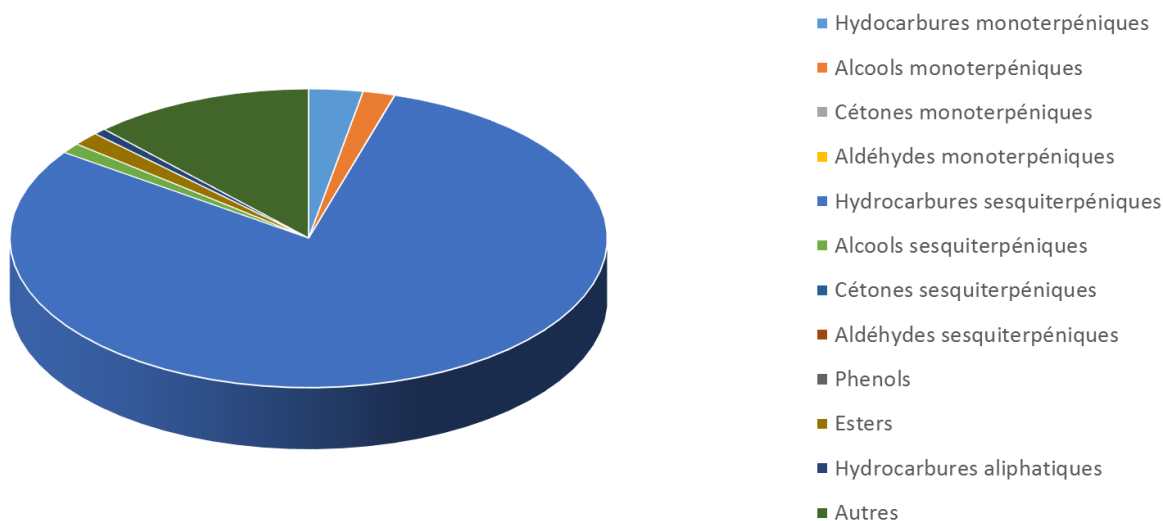



|   |  |  |                     |
|---|--|--|---------------------|
|  <b>FLORIHANA</b> | <b>ENREGISTREMENT DES BULLETINS<br/>ANALYTIQUES : CHROMATOGRAPHIE<br/>ESSENTIAL OIL CHROMATOGRAPHY SHEET<br/>RECORDS</b> | <b>FORM-LAB005-B</b>   | <b>Page 1 sur 3</b> |
| <b>JE INTERNATIONAL</b>   |  | <b>Date d'entrée en vigueur / taking<br/>effect : 10/06/2011</b> |                     |


|  |   |   |
|--|---|---|
| Date   | : | 27/08/2020                                    |
| Référence produit / Product reference                                      | : | FLE015  |
| Huile essentielle de / Essential oil of                                    | : | Camomille Matricaire / German chamomile       |
| Numéro de lot / Lot Number   | : | B270820F                                      |
| Densité à 20°C (g/cm <sup>3</sup> ) / Density to 20°C (g/cm <sup>3</sup> ) | : | 0.8754  |
| Indice de réfraction / Refractive index                                    | : | 1.49601                                       |
| Pouvoir rotatoire à 20°C / Optical rotation to 20°C                        | : | ND  |
| Mode de culture / Culture mode   | : | Cultivé / Cultivated                          |
| Pays / Country   | : | France  |
| Date de production / Production date                                       | : | 06/2020                                       |
| D.L.U. / Shelf life  | : | 07/2025                                       |
| Mode d'extraction / Extraction mode  | : | Distillation à la vapeur / Steam distillation |
| % Bio / % Organic  | : | 100%  |
| Nom Latin / Latin Name   | : | Matricaria recutita L.                        |
| Parties utilisées / Used Parts   | : | Fleurs / Flowers                              |



|   |  |  |                     |
|---|--|--|---------------------|
|  <b>FLORIHANA</b> | <b>ENREGISTREMENT DES BULLETINS<br/>ANALYTIQUES : CHROMATOGRAPHIE<br/>ESSENTIAL OIL CHROMATOGRAPHY SHEET<br/>RECORDS</b> | <b>FORM-LAB005-B</b>   | <b>Page 2 sur 3</b> |
| <b>JE INTERNATIONAL</b>   |  | <b>Date d'entrée en vigueur / taking<br/>effect : 10/06/2011</b> |                     |

| Molécule                          | %     |
|-----------------------------------|-------|
| ALPHA-PINENE                      | 0.021 |
| SABINENE                          | 0.084 |
| BETA-MYRCENE                      | 0.054 |
| 2-PENTYL FURANE                   | 0.053 |
| YOMOGI ALCOOL                     | 0.013 |
| OCTANAL                           | 0.050 |
| PARA-CYMENE                       | 0.111 |
| <b>LIMONENE *</b>                 | 0.024 |
| 1,8-CINEOLE (EUCALYPTOL)          | 0.047 |
| (Z)-BETA-OCIMENE                  | 0.231 |
| (E)-BETA-OCIMENE                  | 1.389 |
| GAMMA-TERPINENE                   | 0.439 |
| ARTEMISIA ALCOOL                  | 0.043 |
| TERPINOLENE                       | 0.020 |
| TERPINENE-4-OL                    | 0.180 |
| ALPHA-TERPINEOL                   | 0.056 |
| <b>LINALOL *</b>                  | 1.156 |
| NONANAL                           | 0.140 |
| CAMPHRE                           | 0.160 |
| MENTHONE                          | 0.015 |
| BORNEOL                           | 0.126 |
| ACETATE DE LINALYLE               | 1.155 |
| 4,8-DIMETHYL-NONA-3,8-DIENE-2-ONE | 0.023 |
| ACETATE DE LAVANDULYLE            | 0.144 |
| BICYCLOELEMENE                    | 0.365 |
| DELTA-ELEMENE                     | 0.145 |
| BETA-ELEMENE                      | 0.099 |
| SILPHINENE                        | 0.044 |
| ACETATE DE GERANYLE               | 0.045 |
| ALPHA-COPAENE                     | 0.109 |
| MODHEPH-2-ENE                     | 0.158 |
| ISOCOMENE                         | 0.535 |
| BETA-ISOCOMENE                    | 0.078 |
| BETA-YLANGENE                     | 0.089 |
| BETA-CARYOPHYLLENE                | 0.349 |
| ALPHA-CARYOPHYLLENE               | 0.077 |
| BETA-CEDRENE                      | 0.085 |



|   |  |  |                     |
|---|--|--|---------------------|
|  <b>FLORIHANA</b> | <b>ENREGISTREMENT DES BULLETINS<br/>ANALYTIQUES : CHROMATOGRAPHIE<br/>ESSENTIAL OIL CHROMATOGRAPHY SHEET<br/>RECORDS</b> | <b>FORM-LAB005-B</b>   | <b>Page 3 sur 3</b> |
| <b>JE INTERNATIONAL</b>   |  | <b>Date d'entrée en vigueur / taking<br/>effect : 10/06/2011</b> |                     |

|                                   |               |
|-----------------------------------|---------------|
| AROMADENDRENE                     | 0.029         |
| (E)-BETA-FARNESENE                | 58.012        |
| ALLO-AROMADENDRENE                | 0.128         |
| Ar-CURCUMENE                      | 0.071         |
| GERMACRENE D                      | 4.991         |
| VIRIDIFLORENE                     | 0.428         |
| (E,E)-FARNESENE                   | 7.307         |
| BETA-BISABOLENE                   | 0.276         |
| OXYDE B DE ALPHA BISABOLOL        | 4.505         |
| OXYDE A DE ALPHA BISABOLOL        | 3.375         |
| ALPHA-BISABOLOL                   | 0.061         |
| OXYDE ALPHA-BISABOLONE            | 2.814         |
| GAMMA-CADINENE                    | 0.067         |
| DELTA-CADINENE                    | 0.149         |
| EPI-ALPHA-CADINOL                 | 0.109         |
| BETA-SESQUIPHELLANDRENE           | 0.035         |
| (E)-NEROLIDOL                     | 0.189         |
| DENDROLASINE                      | 0.084         |
| SPATHULENOL                       | 0.534         |
| OXYDE DE CARYOPHYLLENE            | 0.115         |
| HEXADECANE                        | 0.187         |
| BETA-EUDESMOL                     | 0.096         |
| PENTADECANAL                      | 0.302         |
| CHAMAZULENE                       | 1.310         |
| NEOPHYTADIENE                     | 0.030         |
| 6,10,14-TRIMETHYL-2-PENTADECANONE | 0.264         |
| (E)-SPIROETHER                    | 3.105         |
| (Z)-SPIROETHER                    | 0.190         |
| DOCOSANE                          | 0.021         |
| TRICOSANE                         | 0.056         |
| PENTACOSANE                       | 0.117         |
| HEPTACOSANE                       | 0.024         |
| <b>Total</b>                      | <b>96.893</b> |

\* = Substance(s) allergène(s) / allergen(s)

\*\* = Substance(s) classée(s) CMR / Substance(s) classified as CMR

