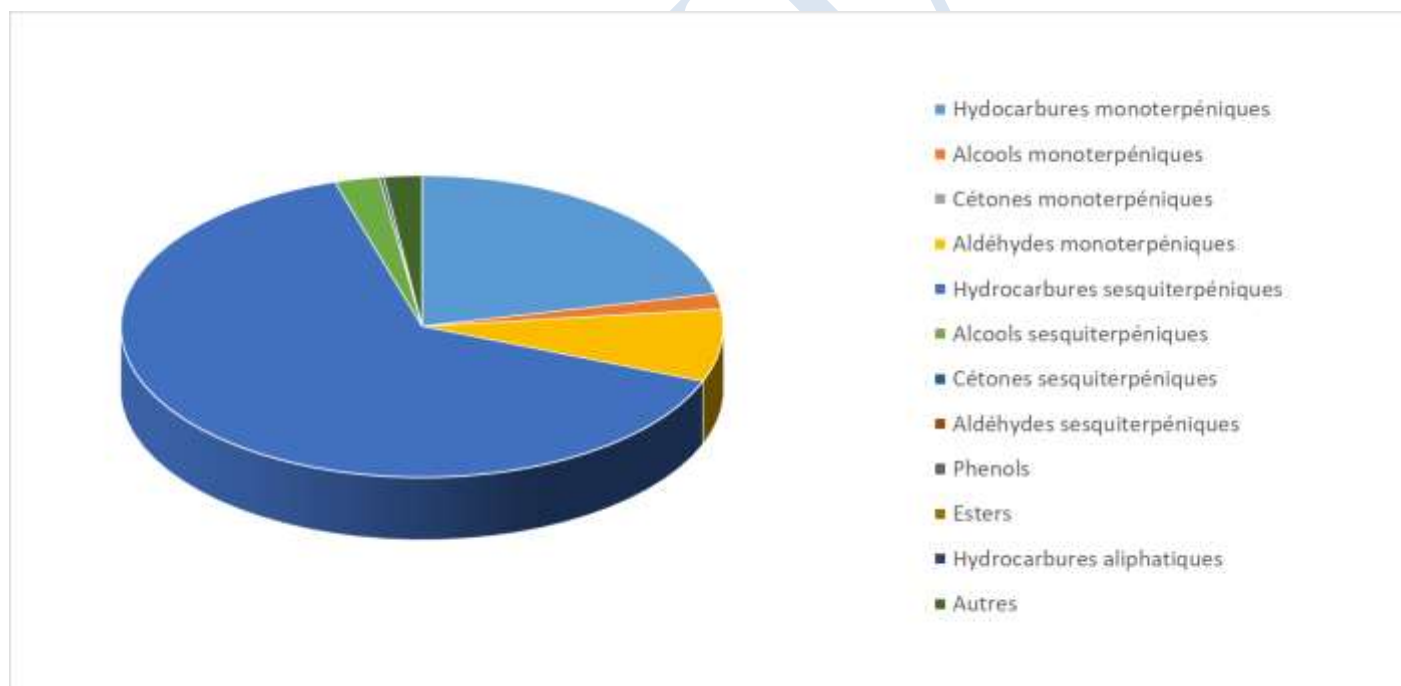


 <b>FLORIHANA</b> JE INTERNATIONAL	<b>ENREGISTREMENT DES BULLETINS          ANALYTIQUES : CHROMATOGRAPHIE          ESSENTIAL OIL CHROMATOGRAPHY          SHEET RECORDS</b>	7-2-ENR-005 v3	Page 1 sur 3
		Date d'application : 01/01/2013	
		Date de révision : 15/04/2022	

Date : 21/07/2025  
 Référence produit / Product reference : FLE115  
 Huile essentielle de / Essential oil of : Gingembre / Ginger  
 Numéro de lot / Lot Number : AZ210725MG  
 Densité à 20°C (g/cm<sup>3</sup>) / Density to 20°C (g/cm<sup>3</sup>) : 0.877  
 Indice de réfraction / Refractive index : 1.489  
 Pouvoir rotatoire à 20°C / Optical rotation to 20°C : -22.678°  
 Mode de culture / Culture mode : Cultivé / Cultivated  
 Pays / Country : Madagascar  
 Date de production / Production date : 01/2025  
 D.L.U. / Shelf life : 02/2030  
 Mode d'extraction / Extraction mode : Distillation à la vapeur / Steam distillation  
 % Bio / % Organic : 100%  
 Nom Latin / Latin Name : Zingiber Officinale  
 Parties utilisées / Used Parts : Rhizome



<b>Molécule</b>	<b>%</b>
2-HEPTANOL	0.064
TRICYCLENE	0.154
<b>ALPHA-PINENE</b>	2.665
<b>BETA-PINENE</b>	0.339
CAMPHENE	7.788
6-METHYL-5-HEPTEN-2-ONE	0.156
BETA-MYRCENE	1.008
ALPHA-PHELLANDRENE	0.275
BETA-PHELLANDRENE	4.287
PARA-CYMENE	0.064
<b>LIMONENE *</b>	1.526
1,8-CINEOLE (EUCALYPTOL)	3.329
<b>TERPINOLENE</b>	0.216
TERPINENE-4-OL	0.103
<b>ALPHA-TERPINEOL</b>	0.437
<b>LINALOL *</b>	0.274
2-NONANOL	0.060
CITRONELLAL	0.065
BORNEOL	0.752
TRANS-ISOCITRAL	0.068
<b>NERAL *</b>	2.902
<b>GERANIOL *</b>	0.123
<b>GERANIAL *</b>	4.715
2-UNDECANONE	0.211
DELTA-ELEMENE	0.068
BETA-ELEMENE	0.712
GAMMA-ELEMENE	0.186
CYCLOSATIVENE	0.286
ALPHA-COPAENE	0.484
BETA-COPAENE	0.029
SESQUITHUJENE	0.200
BETA-SESQUIPELLANDRENE	10.836
HYDRATE DE SESQUISABINENE	0.335
ALPHA-TRANS-BERGAMOTENE	0.099
TRANS-BETA-FARNESENE	0.380
ALLO-AROMADENDRENE	0.249



SELINA-4,11-DIENE	0.101
BETA-SELINENE	0.148
7-EPI-ALPHA-SELINENE	0.338
TRANS-CADINA-1,(6)4-DIENE	0.128
GAMMA-CADINENE	0.368
DELTA-CADINENE	0.307
Ar-CURCUMENE	6.723
ALPHA-ZINGIBERENE	29.625
ALPHA-MUUROLENE	2.078
TRANS-TRANS-ALPHA-FARNESENE	4.880
BETA-BISABOLENE	5.782
TRANS-GAMMA-BISABOLENE	0.327
ELEMOL	0.264
NEROLIDOL	0.857
ZINGIBERENOL	0.577
ALPHA-EUDESOL	0.550
POGOSTOL	0.108
EPI-BETA-BISABOLOL	0.064
<b>FARNESOL*</b>	0.232
FARNESAL	0.113
EPOXY ZINGIBERENE	0.131
7-EPI-CIS-SESQUISABINENE HYDRATE	0.494
7-EPI-TRANS-SESQUISABINENE HYDRATE	0.303
<b>Total</b>	<b>99.943</b>

\* = Substance(s) allergène(s) / allergen(s)

\*\* = Substance(s) classée(s) CMR / Substance(s) classified as CMR

